



WELCOME TO TIG COTTAGE

**WELCOME
TO TIG
COTTAGE**

“On the Colmonell and Stranraer road and three miles from the former place, a small hamlet consisting of five houses and a smithy occupied principally by agricultural labourers. Built of lime and stone, one storey high and in good repair”

Description of Heronsford from the Ayrshire OS Name Books, 1855 - 1857.



Tig Cottage, 1879

MEET YOUR HOSTS

WELCOME TO TIG!

We know you're going to love it here.

Tig Cottage is a real escape from a busy world. Listen and you can hear the river burbling on it's journey out towards the sea, the singing of the birds in the trees, and depending on the time of year, the lambs calling in the fields nearby.

Look outside and before long, you'll spot all kinds of birds, and maybe a rabbit or two making it's way through the garden. At dusk, or on bright moonlit nights, you can see pipistrelle bats using the sky as their playground as they hunt for insects.

Whilst the immediate surroundings are beautiful, there is so much to explore in the area too!

Will you be tempted by the the windswept coastline that has ensnared so many ships and had a rich history in smuggling, or the historic castles and houses that are scattered throughout South West Scotland, or maybe it's the rugged scenery formed by the Southern Upland fault millions of years ago that had drawn you here?

Whichever it is, we know you'll have a wonderful stay!

ABOUT TIG COTTAGE

EMERGENCY INFORMATION

Getting help in an emergency

999

The national emergency number for police, ambulance, fire or coastguard.

101

The national non-emergency number for police.

111

The national non-emergency number for medical advice or concerns, including mental health advice

Accident & Emergency

The nearest A&E department is at University Hospital, Dalmellington Road, Ayr, KA6 6DX.

Telephone 01292 601 555.

The nearest **minor injuries clinic** is Givan Community Hospital, Bridgemill, Girvan, LA26 9HQ.

Telephone 01465 712 571

Chemist / Pharmacy

The nearest pharmacy is at Girvan Community Hospital.
Telephone 01465 712 571.

There is also a Lloyds Pharmacy at 48 Hanover Street,
Stranraer, DG9 7RP.
Telephone 01776 702 201.

Vets

Alan Jeans, 5 Westley Road, Girvan, KA26 9DB.
Telephone 01465 714418 (24 hour telephone number).

Garage / Breakdown Service

The nearest local garage / petrol station is the Shellknowne
Garage, Main Street, Ballantrae, KA26 ONA.
Telephone 01465 831 365.



The Shellknowne Garage, Ballantrae



Tig Cottage

ABOUT TIG COTTAGE

HOUSE RULES

Tig Cottage is in a small rural hamlet. Please help us help you have a wonderful stay by following these simple rules.

No smoking.

Please do not smoke inside the cottage.

The smell is difficult to remove and guests who stay after you could be allergic to cigarettes.

If you smoke outside, please stay away from the large red LPG tanks (they're combustable) and dispose of your cigarette butt considerately.

Please take your shoes off inside.

Scotland can get pretty muddy sometimes!

Tig Cottage is carpeted or has warm vinyl on the floor.

There is a tray for your shoes in the hall.

Only pee or poop in the toilet and only water down the sink.

Tig Cottage has a septic tank; it's not connected to the sewers. Putting anything other than pee, poop or water down the toilet, bathroom sink or kitchen sink can cause the pipes to block, which will result in sewerage coming back up the toilet and sink. That's kinda stinky for everyone.

There is a bin in the bathroom for items like tampons, baby wipes, cotton wool etc.

Please clean up after your pets.

We love pets and know they can sometimes have accidents. Please clean up after your pet's accident using the "doggy disaster kit" under the sink in the kitchen (it's also suitable for cats!)

No overnight guests.

If you're coming to visit family, we understand if they come round for the day. But Tig Cottage is not able to sleep more than four guests, and the sofas are not designed for sleeping on (they won't be comfortable and may even end up breaking the backs). It's also against your guest agreement.

Please respect your neighbours.

Please keep any noise down between 10PM and 7AM. Because Heronsford is very quiet and rural, noise will carry for a long distance.

Checking in and out

Check in time is at 4PM unless otherwise agreed. We'll try to accommodate requests for an early check in, but a lot depends on when our previous guests depart and the condition of the cottage after their stay.

Check out time is at 11AM. We request that you check out on time so we can get the cottage ready for the next guest.

ABOUT TIG COTTAGE

GETTING YOUR KEY

Simple but secure

Tig Cottage is fully yours during your stay. No awkward conversations, no worrying about being late for check in because your key is in a key safe, sometimes known as a lock box, to the left of the front door.

The key safe is a black box to the left of the door. On the box you'll see two rows of buttons, numbered 0 - 9, and a round button just below them.

Press the round button and it'll light up all the buttons (the numbers and the round button) blue (so you can see what you're doing).

Type in the four digit code we'll send you the day before you arrive, and if you've got it right, the round button will light up green.



Take hold of the two pieces of black metal either side of the number buttons and pull towards you and down at the same time. The key safe is hinged at the bottom of the safe, and the cover will now swing down revealing the key.

You have five seconds to open the cover from putting in the code. If you don't manage to open the cover in five seconds, the key safe will lock again, and you will need to press the round button and enter the code again.

Remove the key from the key safe and then push the cover up firmly and it'll click into place. The key safe is now locked again.

If you enter an incorrect code, the round button will flash red after a few seconds. You'll need to start again.

If you can't remember your code, please contact us.

Please put your key back in the key safe when you leave (please don't push it back through the door!).

If you lose your key - don't worry, we all lose things from time to time! Please let us know as soon as possible.

There is a spare key in a key safe in the back garden, on the wooden fence post at the top of the steps down to the river. Should you need to access this key safe, please contact us and we'll give you the code.

ABOUT TIG COTTAGE

DOOR LOCKS

Simple and secure with a single key.

The same key - from the key safe - works on the front and back doors.

Opening the front door from outside

To unlock the door from the outside, simply put the key into the lock and turn the key, and then push the handle down. The door will then open.

Locking the front door from outside

To close and lock the door from outside, simply pull the door closed and then pull the handle into the up position. Then put the key into the lock and turn it clockwise. You can test to see if the door is locked by taking out the key and pulling the handle down as if to open the door.

Opening the front door from inside

To open the front door from inside, simply turn the thumbscrew to the left (anti-clockwise). The lock will make a whirring noise and is now open. It will automatically lock again (making a whirring noise) after ten minutes.

Locking the front door from inside

To close and lock the door from the inside, simply close the door and pull the handle firmly upwards. The door will automatically lock with a whirring noise after ten minutes. To lock it sooner, simply turn the thumbscrew under the door handle to the right until you hear the whirring noise (it can be stiff).

Operating the back door

The back door works in exactly the same way as the front door. The same key opens both the front and back doors.

The key is a secure key that can't be copied at a locksmiths.

If you lose the key, please let us know as soon as possible.



The type of key we use at Tig Cottage.

Please feel free to put it on your own keyring - but please put it back in the key safe when you check out!

ABOUT TIG COTTAGE

SAFETY

Avoiding any unwanted “excitement” during your stay at Tig Cottage

Laws in Scotland around the safety of holiday let properties mean we are legally obliged to take some of these measures.

Ring doorbell

Tig Cottage is a remote part of the world. In order to reduce the likelihood of burglary, or too many guests staying at the cottage (we know you’d never do anything like that, but who knows about the next guest?), we have a Ring doorbell that covers the front path of the property. In cases of emergency, ringing the doorbell will connect you with us should you need to speak to us, but we’d prefer it if you contacted us using the booking app you booked with (we answer very quickly!)

Smoke alarms

There are smoke alarms throughout the property, as well as a heat sensor in the kitchen and a carbon monoxide detector in the living room. Please do not tamper with the arms or move the carbon monoxide sensor. If any of the alarms are triggered, a siren will sound so you know there is a fire, carbon monoxide at a dangerous level or excessive

heat in the cottage (you may wish to call 999 at this point). Should it be needed, the control panel is situated in the hall, on the wall, by the living room door.

Fire extinguishers and fire blankets

There is a fire extinguisher and fire blanket in the living room in the TV cabinet.

There is a fire extinguisher and fire blanket in the kitchen next to the microwave. If you have to use any of these, please let us know so we can replace them.

Safety in the garden

At the back of the garden is a gorge containing the Water of Tig, a small river or burn that flows to the River Stinchar and on to the sea. There are steep concrete steps down the gorge to the burn, but they end approximately six feet above the water. These steps do not have any handrails, and can get slippery due to the moss that grows on them (we remove it, but pesky ol' nature keeps putting it back). We do not advise navigation by children and adults use them at their own risk and we do not advise entering the water.

The garden is not secured for dogs (it is not "dog safe") and there may be wild plants that are toxic if eaten by dogs. We do not advise leaving dogs unsupervised in the garden.

LPG gas canisters

The cottage uses LPG gas as it's primary heating source and there are four large red LPG canisters in the garden attached to the kitchen wall. Please do not smoke next to them or interfere with them. On occasion it may be

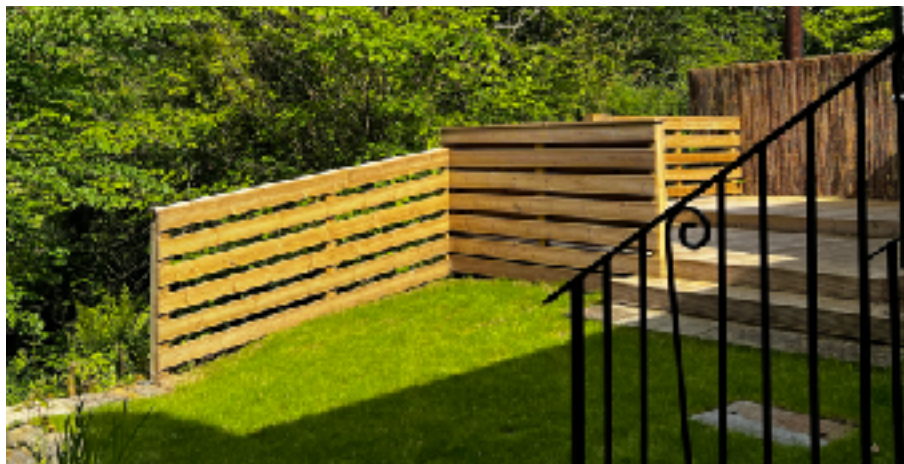
necessary for canisters to be replaced whilst there is a guest in the cottage - this will be done by the local supplier (it's someone from the Shellknowne garage if you want to say hello) and they won't need to bother you. We'll notify you if this is going to happen where possible.

Parking

The driveway for the cottage is on a slope. Please make sure you fully engage the handbrake on your vehicle to prevent any movement.

Electric car charging

The electricity supply in the cottage is not geared for electric car charging and we'd politely request that guests with electric cars don't charge their car from the cottage's electricity. There is an electric car charging station in Ballentrae near the harbour (approximately 3 miles away).



The garden at Tig Cottage



A Pipistrelle bat on a rescuer's finger.



Pipistrelle bat in flight

ABOUT TIG COTTAGE

BATS

Tig Cottage is lucky enough to be in an area teeming with wildlife, including protected bats

If you're out in the garden at dusk, you might be lucky enough to spot a Pipistrelle bat or two.

Pipistrelle bats are protected by law and can't be disturbed. They're not interested in people and if you find one on the ground, they shouldn't be handled. Sometimes, bats have raised their young in the entirely separate roof-space of the cottage, which we are very proud of. They don't come into the living space and don't make any noise.

Bats use their ultrasonic squeaks and echolocation to navigate in the dark. It's pretty awesome but sometimes bats can get confused, especially when they are young.

Open doors and windows can be especially confusing, as they can get in, but often can't work out how to get out. They die very quickly without food or water, so it's much safer for them not to come in the house.

We ask guests to please don't leave the doors or windows open from dusk to stop confused or lost bats from coming into the cottage.



Adders are protected species

ABOUT TIG COTTAGE

ADDERS

Indiana Jones would not be a fan of Scotland.

From around May till October, the UK's only venomous snake, the adder, can be found throughout most of mainland Scotland. Adders prefer wooded or grassy areas, including in populated areas, and can sometimes be seen basking in the sun.

The adder is a smaller, timid snake and uses it's venom to immobilise it's favourite dinner of small mammals and birds. Like bats, adders are a legally protected species.

Adders would prefer to hide than bite people, and their bite isn't serious to most people, except the very young or elderly, although if you are bitten, you should seek medical attention as soon as possible.

For dogs or cats, bites are much more serious. Please contact a vet as an emergency. Emergency vet details are listed on the Emergency Information page.

Keep your animal calm and carry them where possible to reduce circulation of venom through the body as much as possible.



The Heronsford phone box near Tig Cottage

ABOUT TIG COTTAGE

WI-FI AND TV

If you've got to answer that work email, here's how to use the wi-fi and TV.

The TV in the living room is a Samsung Smart TV and is equipped with streaming service apps including BBC iPlayer, ITV X, Netflix, Amazon and the Disney Channel. Channels are accessed through their relevant apps.

Pressing the POWER button on the top left of the remote control turns on the TV, and pressing the HOME button (the button with a picture of a house on it) brings up a scrollable menu at the bottom of the screen with all the installed apps. Use the outer wheel of the remote control button to move between the apps, and press the middle button to select an app and open it. Please log in to your selected app using your account details, and remember to log out again when you leave.

The in-house wi-fi does not reach the kitchen or bathroom, but you will be able to access the local 4G network.

The wifi network name is TigCottage
The password is TigCottage



Heronsford in autumn

ABOUT TIG COTTAGE

HEATING

Tig Cottage has really thick walls, so you might be surprised at how much heat the cottage holds in.

Tig Cottage uses LPG gas (the bright red canisters outside) and a Hive Thermostat which you can find on the kitchen worktop. This is set to come on automatically in the morning and evening to keep you nice and warm.

To boost the heating:

Press the button the top right of the thermostat to turn the heating on for 1 hour.

Press the button again to increase the length of the boost.

Turn the dial to change the boost temperature (it's set to 18 by default).

When the boost finishes, the heating will go back to it's previous mode.

To cancel the boost early, press the red back arrow on the screen.

If you turn the heating up whilst you're in the property, please turn it back down to 18 when you leave or if you go out for the day. This'll help us keep our prices low (and help the environment) as the cost of LPG gas continues to rise.

ABOUT TIG COTTAGE

THE BOILER

Unlikely to be a problem, but always useful to know!

The boiler at Tig Cottage is a Valiant Combo-Boiler, which means it manages the heating via the thermostat and also provides hot water on demand. This can mean that when you turn on the tap for hot water, it can take a moment or two to come through - this is something to be aware of in the shower!

The boiler can be found in the wall mounted cupboard on the far left in the kitchen. In most situations, the boiler will go about it's business without issue.

If the heating doesn't come on, first check the thermostat - does boosting the heating turn it on?

Next, open the cupboard containing the boiler and check the display. If it is displaying an error message, make a note of what it says and contact us on 07788 287098 or via the app for the platform you booked through. We'll talk you through how to reset the boiler, or arrange for our housekeeper or friendly boiler engineer to come and resolve the issue if necessary.

ABOUT TIG COTTAGE

USING THE KITCHEN

Our kitchen is great, whether you're preparing preparing a packed lunch, or cooking a romantic dinner for two.

The kitchen is well equipped with pots and pans, crockery and cutlery in the drawers and cupboards. Washing up supplies are next to the sink and tea towels are in the second drawer down on the left. The surface sprays in metal tins are refillable - if you empty one, please do not put in the bin. Just leave it on the side and let us know it's empty.

Tin foil for lining the oven tray, along with baking paper, is the cupboard to the left of the extractor fan. The oven is very efficient so you may wish to keep an eye on anything cooking to avoid burning!

We kindly ask that guests wash up, and put any used tea towels by the side of the sink, before leaving.

Hot water is on demand, which means it can take a minute or two to heat up. When using the sink for washing up, please remember the cottage is attached to a septic tank - please do not force food waste down the sink or else it will back up and sewage will flood the kitchen and the bathroom.

Extra cleaning supplies, including a “doggy disaster kit” are under the sink and a vacuum cleaner and dustpan and brush are in the utility room to the right. Accidents happen but please let us know if there has been any damage so we can fix it!

The washing machine in the utility room is plumbed in but the lights on the display take a moment to activate - it does work! There is no tumble dryer in the cottage. The nearest full service laundry is the Duncan Street Laundrette, 18 Duncan Street, Girvan, KA26 9AX.



The kitchen at Tig Cottage

ABOUT TIG COTTAGE

BATHROOM BUSINESS

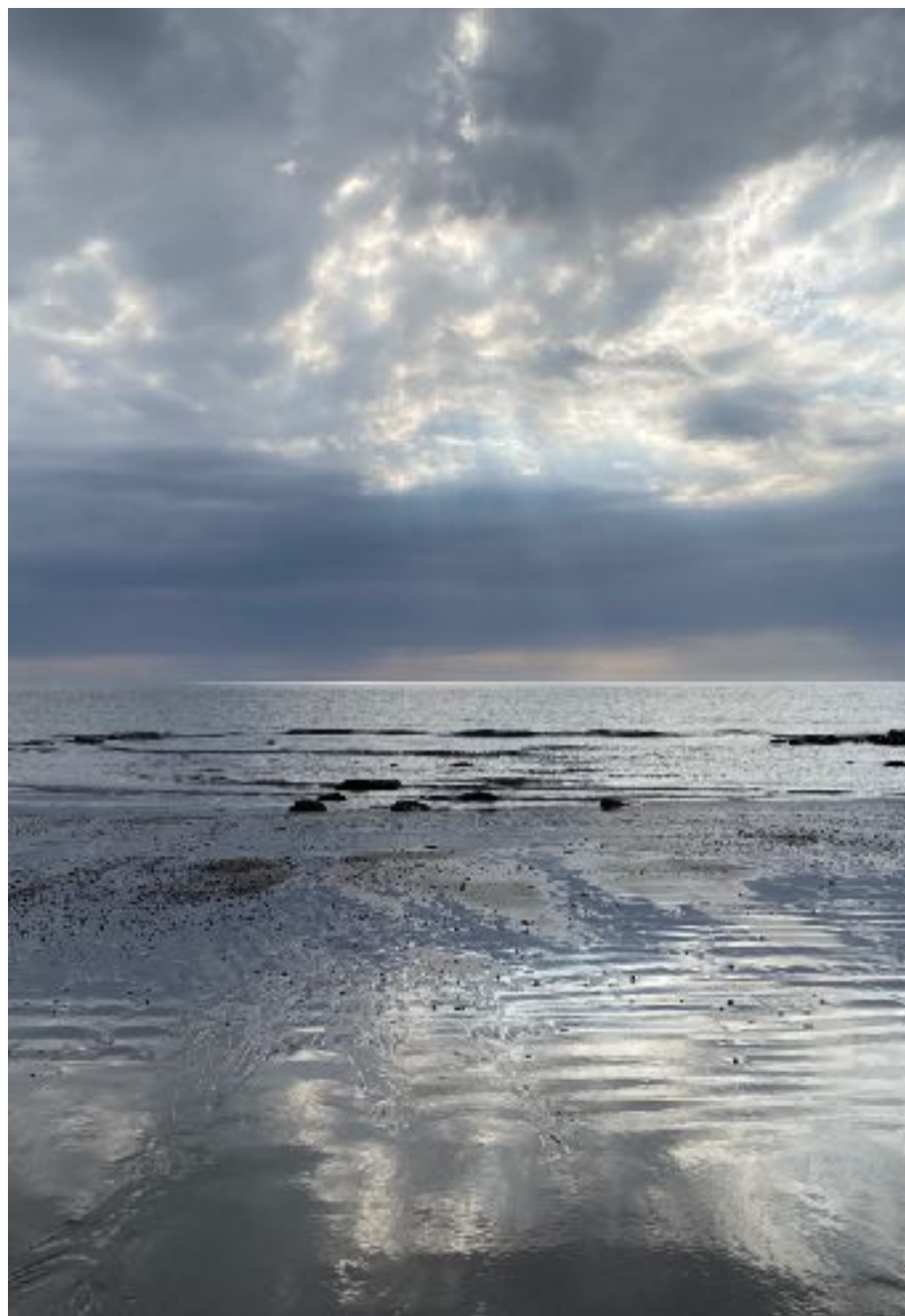
Getting ready for the day.

Tig Cottage is connected to a septic tank, so when using the toilet please do not flush away any sanitary products (including tampons or condoms) - if it's not pee, poop or toilet paper, please use the bathroom bin. Blocking the tank will mean that the system backs up and sewerage will flood the bathroom. Stinky times all round!

Hot water is heated on demand which means that it can take a moment or two for hot water to come through the taps. It also means that it can take a while for the bath to fill - for that reason we suggest using hotter water for the bath and letting it cool rather than choosing the correct temperature to begin with.

The shower is electric and will simply work by turning the dials - there is no cord or switch.

The hand wash and surface spray are in refillable metal tins. If you empty one, please do not put it in the bin - just leave it on the side and let us know so we can refill it.



The beach at Ballantrae

ABOUT TIG COTTAGE

RUBBISH AND RECYCLING

Will you help us help the environment?

More than most places, South Ayrshire has invested in rubbish recycling. You might notice a large number of bins outside the property - there are bins for garden waste, glass bottles, card and paper, plastics and everything else.

There's not enough room in the cottage to have smaller bins matching each of the bins outside, sadly.

We absolutely get that making the trek out to the bin with sorted rubbish isn't what you come on holiday to do, but any recycling you are able to do will be much appreciated by us, and everyone else. Each of the outside bins is labelled with what goes in it.

There are two bins in the kitchen, one in each of the bedrooms and a bin in the bathroom.

Please use the bathroom bin for any sanitary waste including tampons, nappies and condoms to avoid blocking the septic tank.

FOOD AND DRINK AT TIG COTTAGE

WHERE TO EAT

South Ayrshire has a variety of different places to eat - whether it's a pub lunch or an afternoon tea.

Although Tig Cottage is a little remote, there's still plenty of places to eat. Please be aware that no takeaway restaurants deliver to Tig Cottage.

Duck or Grouse Family Bar, Lagganhouse Caravan Park

Walking distance from Tig Cottage, the Duck or Grouse family bar is open every day except Monday and Tuesday from 12 noon. They serve food on Friday to Sunday from 2PM. Booking is recommended.

Call 07917 887030.

The Kings Arms, Main Street, Ballantrae

Popular, community owned pub / restaurant. Currently offering both drink and hot food. Check out the menu on their Facebook page www.facebook.com/thekingsarmsballantrae Call 01465 757 060.

Glennapp Castle, Ballantrae

Glennapp offers a variety of dining options (including a very nice afternoon tea for £39.50. You can sometimes



Ardstinchar Castle then



...and now (Andrew Spratt @andrewsp2009 on Twitter)

get same day reservations) and is available via their website <https://www.glenappcastle.com/dining> or phone 01465 831212.

Turnberry Grand Tea Lounge and Bar

Bar service and food with spectacular views at the world famous Turnberry golf club.

Open Monday - Saturday 11AM - 9PM, with afternoon tea between 12 noon and 5PM.

Booking is recommended.

Call 01655 33991.

Wildings Restaurant

Contemporary restaurant near Culzean Castle, offering lunch and dinner with vegetarian options.

Booking is recommended.

Call 01655 331 401.

Glenapp Castle

Elegant dining options including afternoon tea in a historic castle that's now a luxury hotel / restaurant.

Booking is essential.

Call 01465 831 212.

At Home Thai

Well regarded Thai restaurant in Ayr.

Booking is recommended.

Call 01292 285 856.

FOOD AND DRINK AT TIG COTTAGE

WHERE TO BUY FOOD

If you're looking to eat at home, there's plenty of places to buy food in the local area.

If you know you're going to be cooking for yourself, you may wish to consider pre-booking a supermarket home delivery. The online supermarkets deliver to Tig Cottage - the address you need to use is Tig Cottage, 4 Heronsford, Ballantrae, Girvan, KA26 0LL. Other places to buy food include:

Scotmid Co-Op, Main Street, Ballantrae

Ballantrae's village shop with essential groceries as well as a post office and bakery. The store is open seven days a week with extended opening hours. Please try to use the local store and support the local economy where possible. The Co-op also has a cash machine outside.

Craigiemains Garden Centre, Ballantrae

On the road out of Ballantrae towards Lendalfoot is the Craigiemains Garden Center. They have a small eat-in restaurant serving both hot food and tray-bake style cakes. They also sell a small, varied curated selection of locally



The Core of the Milky Way

produced food.

Asda, 15 Vicarton Street, Girvan, KA26 9HF

Mid-sized store selling groceries and clothes.

Open Monday - Saturday, 7AM to 11PM and Sunday 8AM to 10PM.

Call 01465 711 000.

Lidl, Stoneykirk Road, Stranraer, DG9 7BT

Mid-sized store selling discounted groceries.

Open 8AM to 8PM daily.

Call 0800 977 7766.

Morrisons, Castlehill Road, Ayr, KA7 2HT

Supermarket with an in-store pharmacy.

Open Monday - Saturday, 7AM to 10PM and Sunday 8AM to 7PM.

Call 01292 283 906.



The Scotmid Co-op in Ballantrae



Dog walking on Knockdolian in autumn

ABOUT TIG COTTAGE

BEFORE YOU GO

We hope Tig Cottage has been a wonderful home away from home for you.

If you've used the TV, please remember to log yourself out of any of the streaming services.

If you've used the fridge or freezer, please remember to take any uneaten food with you, or pop it in the relevant bin. Please put any used tea towels by the sink in the kitchen.

Our environment would really appreciate it if you would put any waste into the correct bin.

If your furry friend has been to the toilet in the garden, please clean up the poop (there are dog poop bags under the sink)

We know accidents happen, so if anything has been broken, damaged or stopped working, please let us know so we can replace it.

THINGS TO DO

ABOUT SCOTLAND

Inhabited since the neolithic age, Scotland has a rich history, and the past still weighs heavily on the present.

To say that Scotland's history is complex is an understatement. It has become home to people from across Europe through invasion and migration. It has been involved in bloody internal wars over religion and land - both internally and externally.

In popular culture, Scotland's history has become focused on the Highlands, with a romanticised view of clans and rebellions being the focus of successful movies, TV shows and books. Although they have never claimed to be particularly accurate, they have nevertheless become part of the accepted history, and as a result, Southern Scotland's history is sometimes unfairly ignored.

During your stay in South West Scotland, you can certainly find historical sites with links to feuding clans and royal families. For instance, in the nearby village of Ballantrae stands the remains of Ardstinchar castle. Construction of the castle was started by Hugh Kennedy, who fought in France alongside Joan of Arc. Hugh's descendants lived in

the castle, which was visited by Mary Queen of Scots in 1563, where she went hunting with birds of prey in the surrounding hills - only five years later, she was forced to flee Scotland and took exile in England, before being imprisoned and executed in 1587.

In the 1600s, South West Scotland was also the main home of Covenanters, who held Presbyterian religious beliefs, including that only Jesus could be head of the Presbyterian church.

When the Stuarts (the royal family in England) tried to interfere with Presbyterian church, by naming the King as the head of the Presbyterian church, it caused a huge backlash. The Covenanters were the members of the Presbyterian church who signed a Covenant in 1638 saying that they were opposed to the Stuarts' interference. Ministers were expelled and churches closed - but the Covenanters continued to meet and preach in secret. In 1678, the government raised an army from the Highlands (known as the "Highland Host"), who swept through the South and West of Scotland, looting and plundering. The Covenanters continued to be persecuted, leading to a period known as The Killing Times (1679 - 1688), when Covenanters were martyred for their beliefs.

Monuments for the Covenanters can be found throughout this area of Scotland, as can monuments to victims of more recent conflicts.



Ballantrae

Two minutes from the front door of Tig Cottage is a monument to soldiers from the local area who went to fight in World War One, including a Major Denzil Hughes-Onslow.

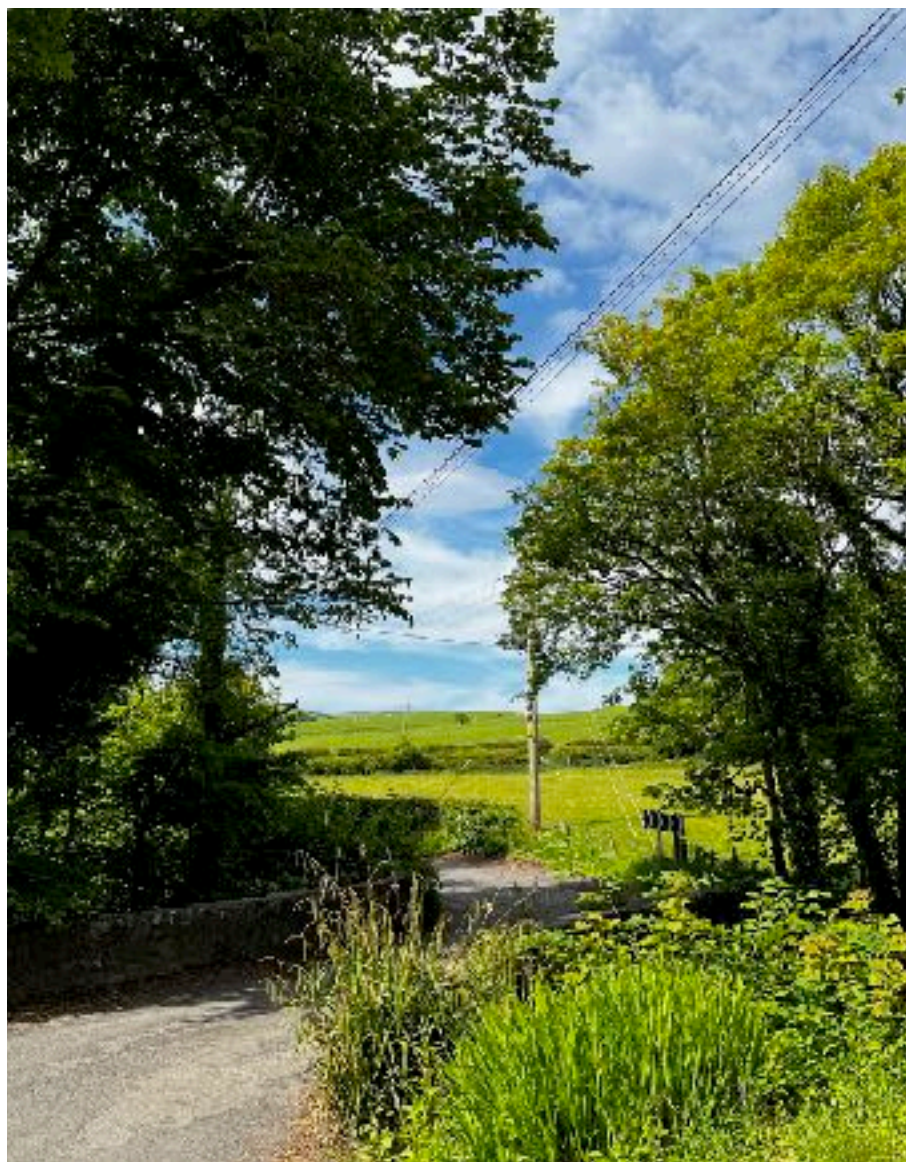
Hughes-Onslow had owned Laggan House estate, part of which is now the "Lagganhouse Caravan Park" in Heronsford. After the Major's death in the Somme in 1916, his widow erected the monument, and turned Laggan House over to the Red Cross to become an auxiliary hospital.

Heronsford was also affected by World War Two. During World War Two, Laggan House became a military research base, where sonic deception (using sound to make the enemy think that the Allies were in a different position) was researched.

Families of the soldiers from the base were billeted with families in Heronsford and Ballantrae.

Although much of the papers from that time are still classified, it's believed sonic deception was used successfully during the war, and that Churchill and Eisenhower visited the area due to the research being carried out.

Scotland's history continues to affect it's present and future, as calls for independence become louder following the UK's departure from the European Union.



The road between Colmonell and Heronsford

THINGS TO DO

STARGAZING

Tig Cottage is near the Dark Sky Park.

Although Tig Cottage does not fall into the strict boundaries of the Galloway Forest Dark Sky park, our part of South Ayrshire has extremely dark skies.

At the right time of year, it is possible to see the very core of the Milky Way overhead from the garden at Tig Cottage, but even when the core cannot be seen, on a moonless night, there are an incredible number of stars and planets that can be seen with just the naked eye.

Stargazing conditions cannot be guaranteed - a cloudy night will cover the stars, and a night that has a moon that is too bright will lighten the sky too much so that stars cannot be seen as clearly.

Top stargazing tips include letting your eyes adjust - don't expect to see everything clearly the moment you step outside. Turn off lights in the cottage so that there is no light leaking out, and don't use your mobile phone. Cloud cover can come and go quickly, so take your opportunities when you can, and remember that the rich colours seen in photos are often added post-production or as a result of long exposures. In reality, colours are much more muted.

THINGS TO DO

VISITING SITES IN SCOTLAND

National Trust For Scotland and Historic Scotland care for the majority of historic sites across Scotland

If you visit any sites in Scotland, you're likely to come across National Trust for Scotland and Historic Scotland sites. There's no obvious rhyme or reason about which organisation manages which site.

Properties looked after by both organisations tend to charge entry fees, which can add up quickly (Culzean Castle, owned by the National Trust for Scotland, is £18 for an adult).

Both organisations offer membership schemes which last for a year - National Trust for Scotland charges £114 for a joint adult yearly membership (payable monthly) and Historic Scotland charges £101 for a joint adult yearly membership (with discounts for certain groups).

Depending on your family's circumstances and the locations you intend to visit, a yearly pass may work out cheaper than multiple sites at full price.

Find out more about both organisations, the sites they manage and their membership schemes at:

National Trust for Scotland: <https://www.nts.org.uk>

Historic Scotland: <https://www.historicenvironment.scot/>



Cairn Holy, a Neolithic chambered cairn near Newton Stewart, managed by Historic Scotland (free entry)

THINGS TO DO

WALKS AND HIKES

South West Scotland has lots of signposted and recognised walks and hikes, along with it's famous "right to roam" laws.

Unlike England, Scotland has a "right to roam", meaning that respectful access to the countryside is enshrined in law, but many visitors to the area prefer to follow well marked paths or routes.

We've included a number of routes in this book, although there are many more in guidebooks and online.

If you choose to go for a walk, please make sure that you take everything you need - remember the weather in this area can be changeable, especially in the hills. You may wish to let someone know where you are going and when you intend to return in case of accident.

Please do not take this book with you or tear out pages - instead, download the PDF from the Tig Cottage website or take a photograph of the relevant page on your phone.

STINCHAR VALLEY TRAILS

BALLANTRAE & AROUND

The valley of the river Stinchar is one of the most beautiful and tranquil in Southern Scotland.

The river Stinchar rises in the Galloway Forest and on through the villages of Barr, Pinwherry and Colmonell, reaching the sea at Ballantrae. The Water of Tig, at the back of Tig Cottage, joins the Stinchar. There are many old oak woodlands, rich in plant life, with the distinctive hill of Knockdolian, an ancient volcanic plug, guarding the lower end of the valley. There's a wide range of fauna and flora in the valley, including roe deer, red squirrels, hares, badgers, otters, herons, oyster catchers, dippers, great spotted woodpeckers, tawny and barn owls. Red deer, curlew, skylarks, golden plovers can all be found in the surrounding hills.

Many of these walks are outwards only - returning to the start will require a taxi, public transport or retracing your steps.

Ballantrae to Pinwherry via The Old Coach Road (8 3/4 miles)

Leaving Ballantrae on the A77, with the church behind you, walk south across the new bridge over the River Stinchar. Take the first left, up the single track road which offers wonderful views of Knockdolian and back to Ailsa Craig. After 1 1/2 miles, turn left at the T junction, and you are now on the old coach road that drops down into the hamlet of Heronsford in the beautiful Tig Valley. Continue along the road, through both open countryside and oak and birch woodland, passing the ruins of Craigneil Castle on your right. The valley of Colmonell will be seen across the valley on your left, where at the church has outstanding stained glass windows by Louis Davis. The road continues up the valley, becoming untamed after Dalreach Farm, and eventually a track along the shoulder of the hill which can be muddy. Some of the finest views of the whole valley, looking back down to Knockdolian, can be seen from this stretch. Pass by Pinwherry Wood before descending to join the main road (the A714) just south of Pinwherry itself. Pinwherry Castle can be seen among the trees to the right of the road. To return to the start of the walk, catch a bus to Girvan and then back to Ballantrae.

Ballantrae to Lagganhouse (3 miles)

Leaving Ballantrae on the A77, with the church behind you, walk south across the new bridge over the River Stinchar. Take the first left, up the single track road which offers wonderful views of Knockdolian and back to Ailsa Craig.



The coast at Ballantrae

About 1/4 of a mile from the main road, after Laggan Diary and a lodge house with iron gates, turn in at the wide gravel entrance on the left, leaving down through the wood. A track of about 1 1/2 miles leads to Lagganhouse Country Park, where you can turn right to follow the lane back to Ballantrae.

Ballantrae River Walk (3/4 miles)

Leave the village on the B7044, past the ruins of Ardstinchar Castle (to your left). A sign and steps on the right lead down to the wide, well mown grassy path beside the river. Narrower at the end, with a fairly steep climb through the wood to re-join the road.

Knockdolian Hill (3/4 miles)

A Stinchar Valley Trails signpost is on the right of the road on the B7044, about three miles from Ballantrae. The way leads through a gate, up across a steep field to a second gate then you are on the open hill to make your way to the top (there are a variety of paths). From the top, there are view to Arran, Ailsa Craig and Ireland. This is the shortest route to the top of Knockdolian, but there are other longer routes signposted from other locations around Colmonell.

Colmonell to Lendalfoot (3 1/2 miles)

At the corner of the road out of Colmonell to the west, towards Ballantrae is a Stinchar Valley Trails sign marked "Via Knockormal". Follow the sign to walk up beside a walk to the large rock known as the Deaf Stone. Continue along the track to the way marker post, then follow the arrow straight uphill till reaching a tall stile over a wall at the back

of the hill. Cross a short, boggy area over to another stile at the next wall, then straight over the field until you see a track leading down over the burn. There is a view of Pinbraid Loch to the right. Follow the track to the Garnaburn road, to either turn left to Lendalfoot or return to Colmonell. Be aware there are normally cattle on this route.

AYRSHIRE COSTAL PATH

GLENAPP - BALLANTRAE

The Ayrshire Coastal Path is a long distance walk around the Ayrshire coast, divided into a number of different sections.

Tiny Glenapp Kirk sits on the opposite side of the busy A77. With the coast still yet to be viewed, turn your back on the kick and head along the estate track opposite - a gentle uphill warm up prior to branding right at Craignlea House and beginning a steeper ascent to around the Southern end of Sandlock Hill. The coastal views being at this point, with busy Loch Ryan below and Corsewall Lighthouse beyond on the northern tip of the Rhins of Galloway. On a clear day, walkers will be rewarded with views to Ireland and the Mull of Kintyre on the horizon.

Follow the track as it curves back inland through the cleavage of Sandwich and Blarbuie Hills to reach a wild moorland plateau dotted with prehistoric earthworks and standing stones. Continue along the easy track to bypass Glendrisaig Farm down to the left. Further on, ignore a track branching left (originally the coast path took this route but

following the loss of a bridge, it has been rerouted to continue a head), continuing to a tarred road at High Ballochdowan.

Keep ahead along the rare road to Kilantringan Bridge. Here, turn left to follow the minor road, curving right at Low Ballochdowan, Further on, the road swings to the right and then to the left, passing Craigalbert and Meadow Park. Much further on, ignore a turning to the right (to Glenapp Castle) and instead keep straight on towards Garleffin.

Ignore a branch road on the left. The 1.5km long gravel bank at the mouth of the River Stinchar is a designated Site of Special Scientific Interest (SSSI) due to the large number of terns that choose this location to breed during the summer.

Continue ahead along the road to reach the A77 and turn left along the pavement towards the parallel bridges crossing the river (you're now on the outskirts of Ballantrae). The original route crossed over the 1776 bridge (made out of some of the stones from Ardstinchar Castle), but this is closed due to being unsafe. Instead, use the new bridge on the main road.

Follow the road as it enters Ballantrae, turning left down The Vennel by the church to reach the beach at Ballantrae, next to the aforementioned gravel banks.



Map of the route between Glenapp and Ballantrae

AYRSHIRE COSTAL PATH

BALLANTRAE - LENDALFOOT

The Ayrshire Coastal Path continues through Ballantrae and along the coast towards Lendalfoot and Girvan.

From the car park in The Vennel (see the last walk, Glenapp to Ballantrae), head north along the sandy beach to reach the small protected harbour at The Foreland. Dating from 1846, this harbour was once a thriving herring port until larger, modern fishing boats outgrew it and herring stocks declined.

Head down a small slip and onto the beach - the firm sand makes this an easy 31m with Ailsa Craig a constant companion on the horizon as the waypoint of Bennane Head draws near.

Turn inland at a stream beneath two cottages that form Bennane Lea. The route now follows a temporary division due to cliff falls. Turn right to climb up towards the busy A77 road. Follow the Ayrshire Coastal Path waymarkers to walk along the verge of the east side of the road. Eventually,

you'll reach a car park and view point overlooking Balcreuchan Port and Sawney Bean's Cave - home to a fictional family of cannibals purported to devour travellers along the Carrick Coast in the 16th Century (likely based on a gang of marauders who attacked and robbed travellers on the route).

From the car park the route continues alongside the A77, with a narrow grassy path between the fence and the seaward side of the crash barrier. Thankfully this corralling ends after another 1.5km and it is possible to walk either along the shore or the narrow pavement. A pretty group of wooden houses comes into view with the marginally larger settlement of Lendalfoot beyond, providing an almost Scandinavian scene nestled amongst the volcanic rock outcrops.

South of Carleton Bay is a well maintained picnic area housing a magnificent bronze memorial to the memory of the Imperial Russian battle cruiser Varyag, which sank 500m offshore of this point whilst being towed for scrap in 1920. Thanks to the heroism displayed in an epic battle in the Russo-Japanese war in 1904, the Varyag holds legendary status amongst Russians, and the unveiling of the monument was televised live throughout Russia.

Passing the memorial, the route continues past a row of fishermen's cottages, several tiny slips and breakwaters to reach an old black fisherman's hut almost built into the rocks. A few hundred meters landward of the A77 stands the ruins of Carleton Castle, the ancestral home of the

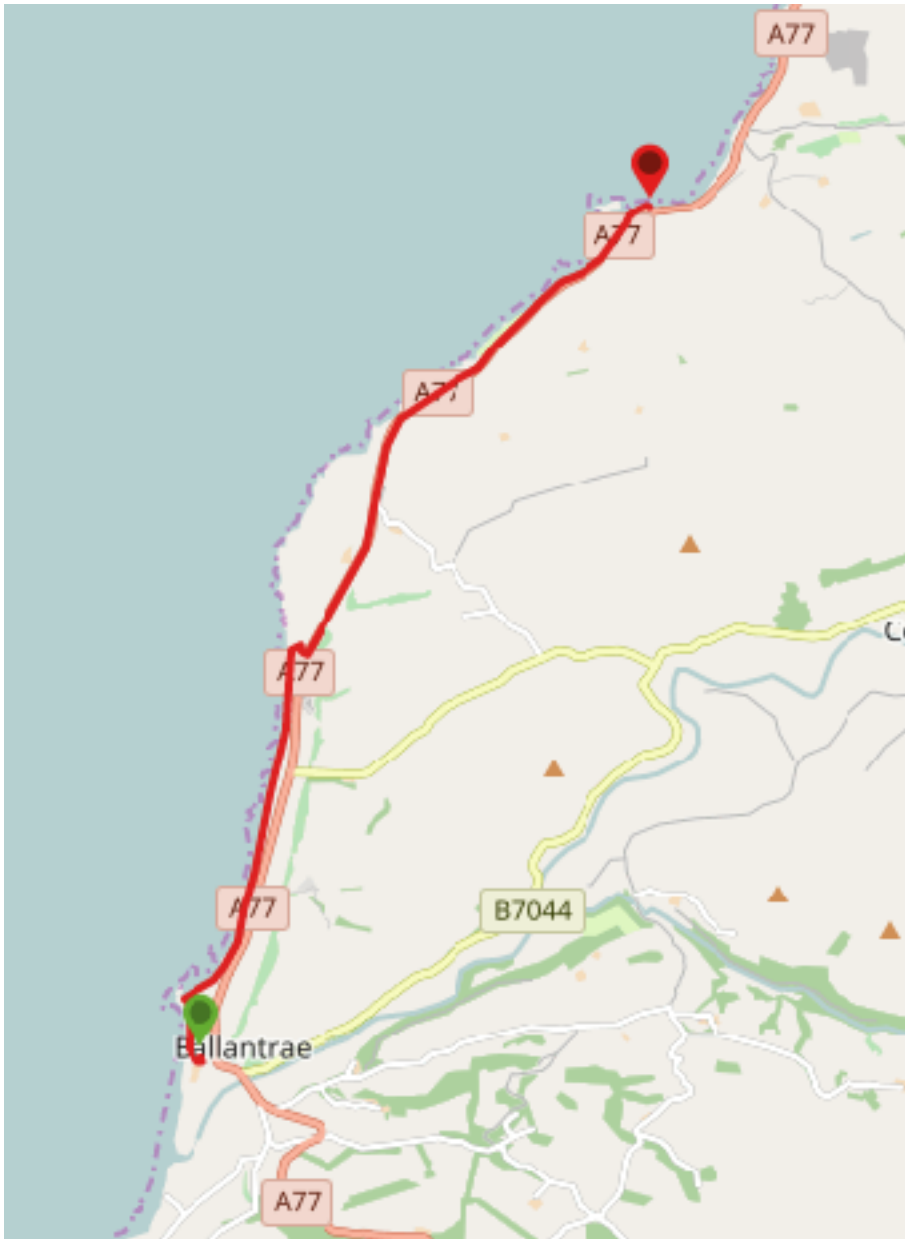
Cathcarts, allies of the feared Kennedy Clan that once ruled over Carrick.

Lendalfoot offers little in way of facilities other than a phonebook, but the regular coastal bus service stops here when hailed, and allows for swift onward transport.

For other stages of the Ayrshire Coastal Path, please visit www.ayrshirecoastalpath.org



The Varag Memorial, Lendalfoot



Map of the route between Ballantrae and Lendalfoot

WALKS FURTHER AFIELD

GALLOWAY NATIONAL FOREST

The Galloway National Forest is the largest forest in the UK and has a number of well routed hikes through it's hundreds of acres.

The Galloway National Forest is described as the “highland of the lowlands” and if you choose to visit, it's easy to see why. An easy and enjoyable drive away, the Forest is home to a number of glorious, well sign posted hikes as well as The Merrick Trail and The Range Of The Awful Hand. The Merrick is the highest peak in Southern Scotland, and forms part of a range, with lower hills, that, from some angles, look like a hand.

We've included some of the best hikes, including the all day Merrick hike, in this book. Please don't take this book with you or tear out pages - instead, you can take a photograph on your phone or download the guidebook from the Tig Cottage website.

GALLOWAY NATIONAL FOREST

MERRICK DAY HIKE

Clear and seldom steep paths are followed to the Merrick's summit. Later stages native route and pathless terrain, requiring careful route finding, best done with good visibility.

The Merrick is the highest mountain in Scotland's Southern Uplands. From it's peak, it's possible to make out Northern Ireland, the Isle of Man and much more. From the road head in Glen Trool, a marked trail climbs above the waterfalls of Buchan Burn and through conifer plantations up to the subsidiary peak of Benyellary. The path slings across 'Neive of the Spit' and up to the trig point on the Merrick's summit. From here, you can return the same route, making it eight miles in total, or go off path, descending down to Loch to Enoch to navigate a tougher, wilder, circular route.

1. The start of the route is at the Bruce's Stone car park above Loch Trool (grid ref NX415803). Turn left to the signposted "Merrick 4" and go through the gate to follow the path above Buchan Burn. Ahead, take the higher path as signposted over the rise of Stroquhan and down through

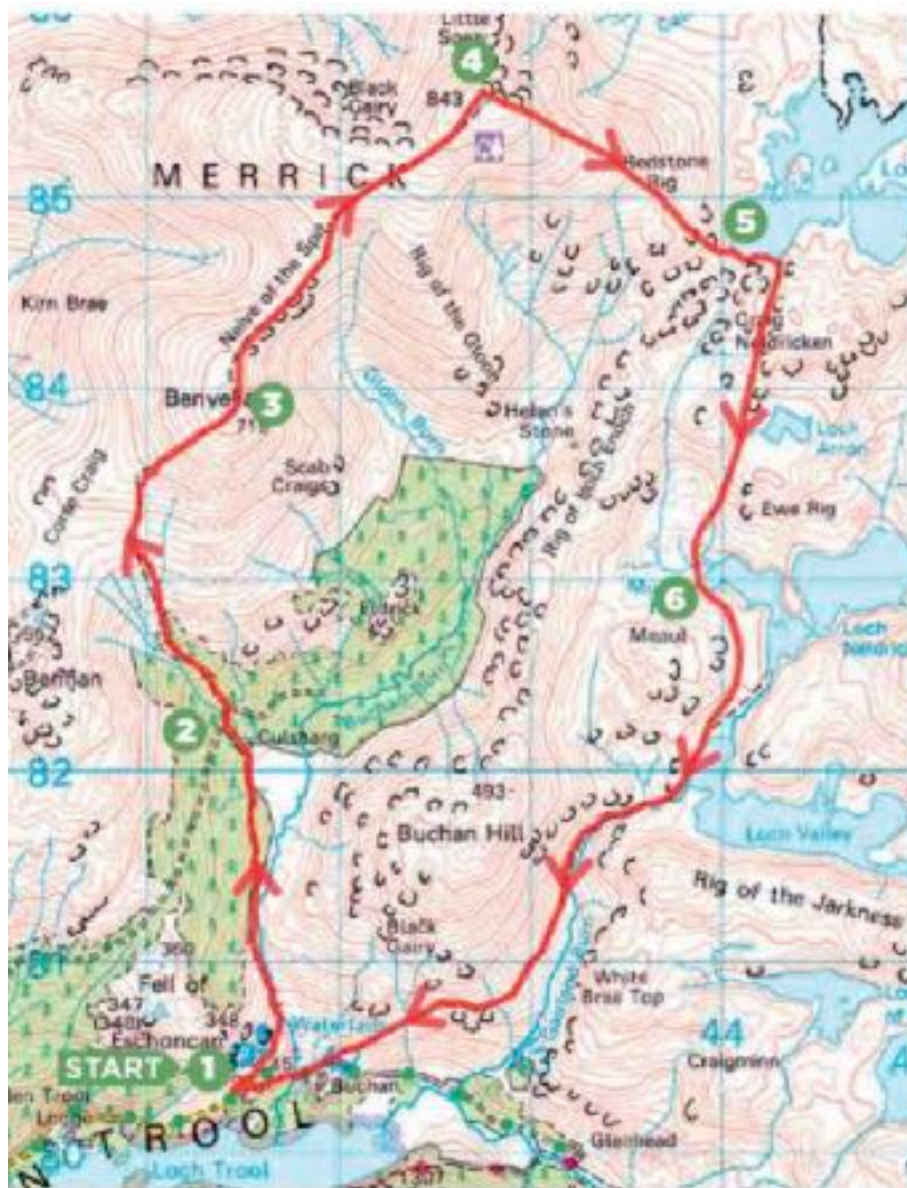
the wall to Culsharg Bothy.

2. At 1 and 1/8th miles, take the path left of a building up through the trees to a forestry track. Turn right over a bridge; shortly afterwards, turn left towards a deer gate / deer path through the forest, signposted "Merrick Climb". Emerge from the trees by the 'crossing the line' concrete boot prints and continue upwards on the stony path to a deer gate. Follow it north up to a wall, where the path turns northeast along the wall and climbs to the top of Benyellary (summit cairn at 719m just to the right of the path, grid ref NX414838).

3. At 2 and 1/2 miles, follow the path beside the wall north-north-east down and cross the saddle of Neive of the Spit. The path veers northeast away from the wall, rising to the summit of the Merrick (marked by a shelter cairn and trig point at 843m, grid ref NX414838).

If you aren't confident navigating through rough, pathless terrain, turn around now and follow the route back to the Bruce's Stone car park.

4. For those confident navigating without a path, from the summit, follow an East South East bearing for about 1.6km down Redstone Ridge, aiming for the South West corner of Loch Enoch. You'll need to route find between outcrops and navigate steeper ground towards the shore. Use the shore and the wall and fence line as catching features.



Merrick Day Hike Map

5. At 5 miles, from the beach at grid ref NX440847, follow a faint path along the south shore for 200m to grid ref NC442846 and turn right (south) away from the shore and up a shallow gully below Craig Neldricken. Maintain your bearing on the rough patch dropping down besides the burn and through the wall, then around the west shore of Loch Neldricken, passing "Murder Hole" marked on maps.

6. At 6 miles, the path rises away from the shore above Mid Burn and drops to Loch Valley and follows the west bank of Garland Burn to the south west. It turns south to pick up a clearer path, and eventually meets a wall, following it west. Go left through the gate and follow the path west south west down to the track. Turn right and follow the track over Buchan Bridge, swinging right up to the car park, or detouring to the left to see Bruce's Stone.



The Range of the Awful Hand

GALLOWAY NATIONAL FOREST

LOCH TROOL

A circular walk around a loch and through trees

This walk is 5 1/2 miles long and is classed as strenuous, across hard surface paths, tracks and beaten path that is soft in places. There are steps to a narrow bridge. Allow three hours and boots are recommended.

To reach the parking area at the start of the walk:

From Newton Stewart, follow the A714 towards Girvan, turning right at Bargrennan to Glentrool village. Follow signs to Glen Trool visitors centre. Go past the visitors centre and continue to follow the road for 1 1/2 miles. Take the first tarred road on your right and follow it to reach a car park just before a bridge.

From the car park, follow the green way markers.

Follow the Southern Upland Way past Caldrons House, through the remnants of the ancient woodlands that once covered most of Loch Trool. Continue uphill into conifers on the steep southern side of the Loch. Along the way, viewpoints offer fantastic views over the Loch to the Fell of Eschoncan and Buchan Hill, foothills of the Merrick.

Near the head of Loch Trool, you pass the site of the Battle of Trool. At this spot, in March 1307, Robert the Bruce defeated a 1500 strong English army led by Sir Aymer deValance. Bruce's army numbered only 300 men, but by luring the enemy along the steep sides of Loch Trool, he managed to ambush them and knock them into the water using boulders.

At the bridge at the head of the Loch, leave the Southern Upland Way to follow the northern shores of the Loch. The route winds down through Buchan and Glenhead woods, passing waterfalls and burns rushing down from the hills above. Both are excellent examples of oak woodland and are home to a variety of wildlife from roe deer to redstarts.

Soon you'll come to a car park where a short detour takes you to Bruces Stone, commemorating the Battle of Trool. From here, continue to follow the way markers back to the car park.



Bruce's Stone above Loch Trool



Loch Trool circular map

GALLOWAY NATIONAL FOREST

GLENTROOL TO MARTYRS' TOMB

A circular forest and woodland walk

This walk is 4 1/2 miles long and is classed as moderate, across minor road and hard surface path and track, with beaten earth that is soft in places. Boots are recommended.

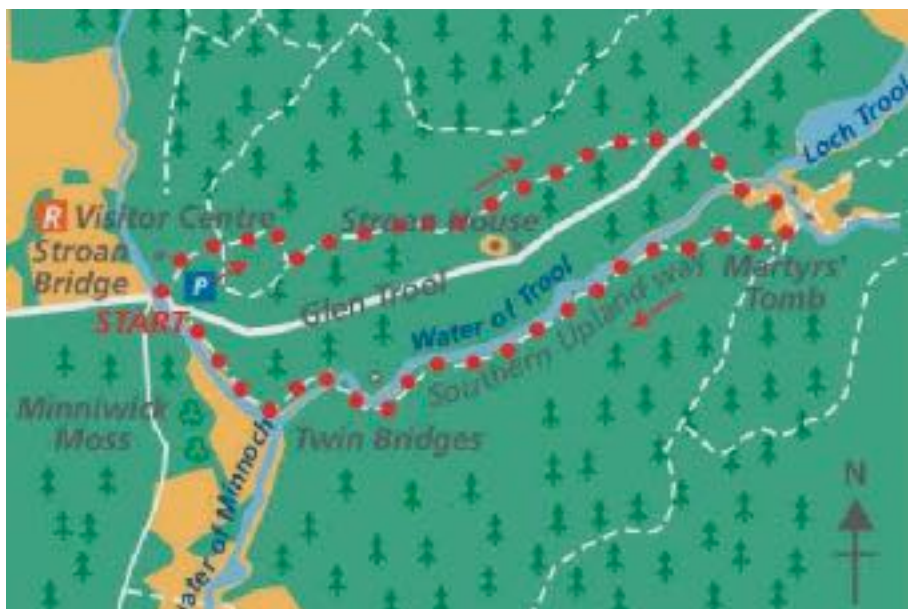
To reach the parking area at the start of the walk, from Newton Stewart, follow the A714 towards Girvan, turning right at Bargrennan to Glentool village. Follow signs to the large car park at Glen Trool visitors centre (open from April until the end of October).

From the visitor centre, follow the yellow way markers. The trail winds through the forest with small numbers of more exotic species such as grand fir amongst the Sitka and Norway spruce. Continue through the forest, passing Spout Head waterfall and enjoy views to Lamachan and Large Hill as you approach Caldons House

Pass the house through ancient, native woodland where a short detour takes you the Martyr's Tomb. This memorial commemorates six Covenanters who were shot when

caught at prayer. Covenanters were Scottish Presbyterians who refused to accept the Episcopalian system introduced by King Charles I, which demanded the sign an oath of allegiance to the King rather than God. This period in Scottish history is known as the Killing Times, and there are many moments to Covenanters through South West Scotland.

Follow the Southern Upland Way along the meandering Water of Trool. There are good views to the hills on both sides of the glen as you approach the Water of Trool bridge. To the south, Craignaw sits in front of the higher peaks of Large and Lamachan hill. Leaving the Southern Upland Way, the path crosses over the river via the bridge and returns to the car park, passing by the attractive rapids and falls at Stroan Bridge.



Map of the route from Glentrool to the Martyrs Tomb

GALLOWAY NATIONAL FOREST

MURRAY'S MONUMENT

A circular forest walk with a steep climb.

This walk is 1 1/2 miles long and is classed as strenuous, with a steep climb to the monument across hard surface path and track. Allow 1 1/2 hours. Strong shoes or boots are recommended.

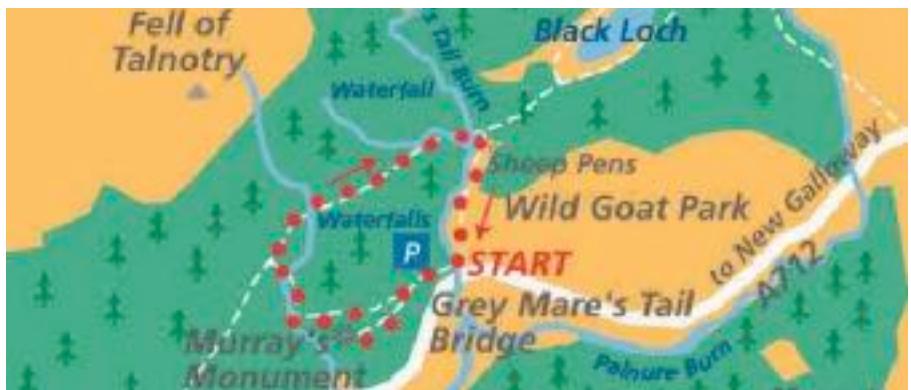
To reach the parking area at the start of the walk, from the A75, just east of Newton Stewart, follow the A712 to the Galloway Forest Park. After approximately 6 1/2 miles, the car park for Grey Mare's Tail is on your left. From the car park, follow the red waymarkers along the Talnotry Trail.

The stretch of the A712 is a very scenic stretch of road, winding through forests and moorland with rugged hills rising on either side. Other attractions include the Red Deer Range and the Goat Park, large areas of hillside fences off to contain some of the red deer and wild goats that roam these hills, and Clatteringshaws Visitor Centre on the shores of the Loch (open April to October).

The steep climb up to Murray's Monument is well worth the effort. The monument was erected in 1835 in memory of Alexander Murray, a local shepherd boy who later became professor of oriental languages at Edinburgh University. It stands in a prominent position on the hillside with commanding view of the valley and the northern slopes of Cairnsmore of Fleet.

The trail continues through the forest, be aware the trail joins one of the mountain bike trails for approximately 250 meters before it joins the old Edinburgh Road, once used by pilgrims on their way to Whithorn. After crossing the Grey Mare's Tail burn, follow the path downhill, through old sheep pens where eerie faces await you. These unusual carvings, set into the stone walls of the pens, are part of the Gallow Forest Park arts programme.

Follow the path down craggy, heather clad slopes to the car park. A viewing point here is the best place to see the Grey Mare's Tail waterfall as it cascades over rocks before meeting the Palnure burn.



Map of the Murray's Monument walk

NEWTON STEWART WALKS

RIVERSIDE POETRY WALK

A circular walk around the river with poetry.

This walk starts and ends in the Riverside car park, and covers both banks of the River Cree. It's 1 1/2 miles long and takes around an hour. It goes over paths, side roads and grass. There are some steps, a stile and a kissing gate.

The walk has a number of poetry inscriptions on the way, written by a local poet named Liz Niven about the Cree.

Start the walk at the car park - there is a poetry plaque on the river bank, and another engraved on the metal of the bridge. Follow the footpath on the west bank of the river, looking out for anglers and river birds such as mallards, swans and goosanders. More poetry can be found engraved on a granite seat.

At the underpass, climb the steps to the righted cross the river where the anglers' lay-by where another poem can be found engraved on the granite. Descend the path to the stile into the fields and proceed to the west end of the Sparling Bridge where another verse can be found.

Carry straight on along the riverside to the main road before turning left and crossing the Cree Bridge. This bridge was built in 1813, replacing an earlier wooden bridge.

Turn left, past the gardens and memorial to Randolph, the 9th earl of Galloway. Turn left to the riverside at the clock tower to spot the last poem on the sandstone river wall before returning to the car park.



A vintage postcard showing Newton Stewart from Minnigaff

NEWTON STEWART WALKS

OLD MINNIGAFF

A circular walk around the town and Old Minnigaff

This walk takes you from the car park to Old Minnigaff and back. It has a mixture of pavement, side roads and footpath, and includes a few short climbs. It covers 2 3/4 miles and should take around 1 1/2 hours.

From the Riverside Car Park, cross the Sparling Bridge and turn left along the river side. Follow the road, enjoying the fine view of the Cree bridge, to the junction with the main road. Go straight ahead there the old settlement of Creebridge passing the Old Toll House on the left.

The pleasant walk from Creebridge into the centre of Old Minnigaff provides views of the rivers and passes fine buildings such as the Corn Mill built in the 1800s, which is now in residential use.

After the Youth Hostel, turn left at the next junction to travel up Old Edinburgh Road, a surviving section of the historic route that carried trade and pilgrims from Edinburgh to Wigtownshire. At the last house, turn left through the kissing gate along the lane into Bower Drive.

Descent to the main road and cross to the lane on the left leading to the picturesque Queen Mary's Bridge and the Penkiln Burn. The adjacent building, the Waulk Mill, is a reminder of the town's former industry based on water power.

Turning left, you'll climb up to Monigaff Church, which occupies an old defensive site at the junction of the Penkiln and the Cree. Take a moment to explore the motte and kirkyard with its medieval church ruins before crossing the pedestrian suspension bridge into Newton Stewart.

Turning left through the public gardens, you cross a mill lade before entering a new housing development which is on the site of the former Cree mills.

The mills manufactured woollen and mohair cloth until the 1980s when it closed.

At the main street, cross diagonally and climb the steep lane leading to a footpath which provides fine views of the town and surrounding woods and hills.

At Windsor Road, turn left straight down the hill to the Salt Box Brae, before rejoining the carpark via the main street.

THINGS TO DO

MOUNTAIN BIKING

There's 400km of mountain biking trails around Dumfries and Galloway, less than an hour away.

The 7stanes mountain bike trails are located across Dumfries and Galloway and the Scottish Borders, all inside forests owned by the Forestry Commissions.

Although there are eight trailheads, only those at Glentroot, Kirroughtree and Glentress have visitors centres. The majority have bike hire on site, with some having "skills areas" where cyclists can test their proficiency before heading out on the trails. For those who are less confident, it's also possible to hire guides or coaches.

The grade of trails range from easy (green) right through to black (severe), with trails ranging from forest roads that are mostly signposted to downhill trails with dirt jumps.

More information - including maps, facilities and trail information - can be found at www.7stanesmountainbiking.com

THINGS TO DO

BEACHES

The South West coast of Scotland has a number of wonderful beaches.

The beaches across Scotland's South West coast range from the rugged and remote, to coastal resorts warmed by the Gulf Stream. Some are nature reserve with migrating birds whilst others wouldn't be out of place in Southern England with ice cream and fair rides.

Ballantrae beach in Ballantrae is a nature reserve that offers nesting grounds for a wide variety of birds in the nearby cliffs. It also forms part of the Ayrshire Coastal path long distance walk. Free parking for the beach can be found in the village.

Maybole's Cory beach has wide white sands with fabulous views. It's also popular for surfing and land yachting.

Turnberry beach, also known as Maiden's beach, has fine views out to the Isle of Arran. Seabirds, including gannets, great northern divers and eider ducks can be seen.

Largs beach in Largs is nearly two hours away, but is worth the trip. Warmed by the Gulf Stream, it has a seaside resort feel (and palm trees!). There are boat trips out to the bay.

PLACES TO VISIT

BALLANTRAE

Ballantrae is the nearest village to Tig Cottage, with a rich history.

Ballantrae is an attractive coastal village on the South Ayrshire coast. Looking out from the coast, you can see Ailsa Craig, Arran, the Mull of Kintyre and (on a clear day), the coast of Ireland.

The village has a long history. The remains of Ardstinchar Castle, once home to the powerful Clan Kennedy, stands at the entrance to the village, overlooking the river Stinchar.

Ballantrae is on the Ayrshire Coastal Path (a long distance walk that goes through some of the most scenic coast in South West Scotland, and the South West Coastal 300 driving route also passes through the village.

The rugged coastline has been the site of many shipwrecks and smuggling adventures in the past. The remains of the Danish Sailing Ship Richard, which blew ashore in 1926, can still be seen when the winds blow enough of the sands away.

Many different types of seabird inhabit or feed in the area and gannets are often seen diving for fish inshore.



A seagull at Largs Beach

Oystercatchers (with bright orange beaks), cormorants, plovers and gulls are seen on the beach and down at the river mouth which is a designated bird sanctuary.

In the harbour, there are grey seals and common seals, and in summer fishermen often see basking sharks and porpoises.

The coastline around Ballantrae is a Site of Special Scientific Interest (SSSI), due to the unique geology of the rocks in the area, known as the Ballantrae Complex.



A boat around at Ballantrae

PLACES TO VISIT

COLMONELL

A beautiful, rural conservation village three miles from Tig Cottage.

Tig Cottage is equidistant between Colmonell and Ballantrae.

From the village, or along the journey from Colmonell to Tig Cottage, the remains of Craigneil Castle stands tall on the opposite side of the Stinchar, vanishing out of site as you drive past towards Tig.

Craigneil Castle is said to have been one of the hiding places of Robert The Bruce, and is also reputed to have a ghost known as the Grey Lady, a member of Clan Kennedy who died in mysterious circumstances.

The local church, St Colmon's, is a beautiful example of a rural country church, and holds services on Sundays at 10AM. The church's stained glass windows, at the west end of the church, were made by Louis Davis in 1909 - 1910. Prior to their installation, they were displayed in London, and have been described as "the finest example of stained glass, ancient or modern, that has ever been produced."

PLACES TO VISIT

GIRVAN

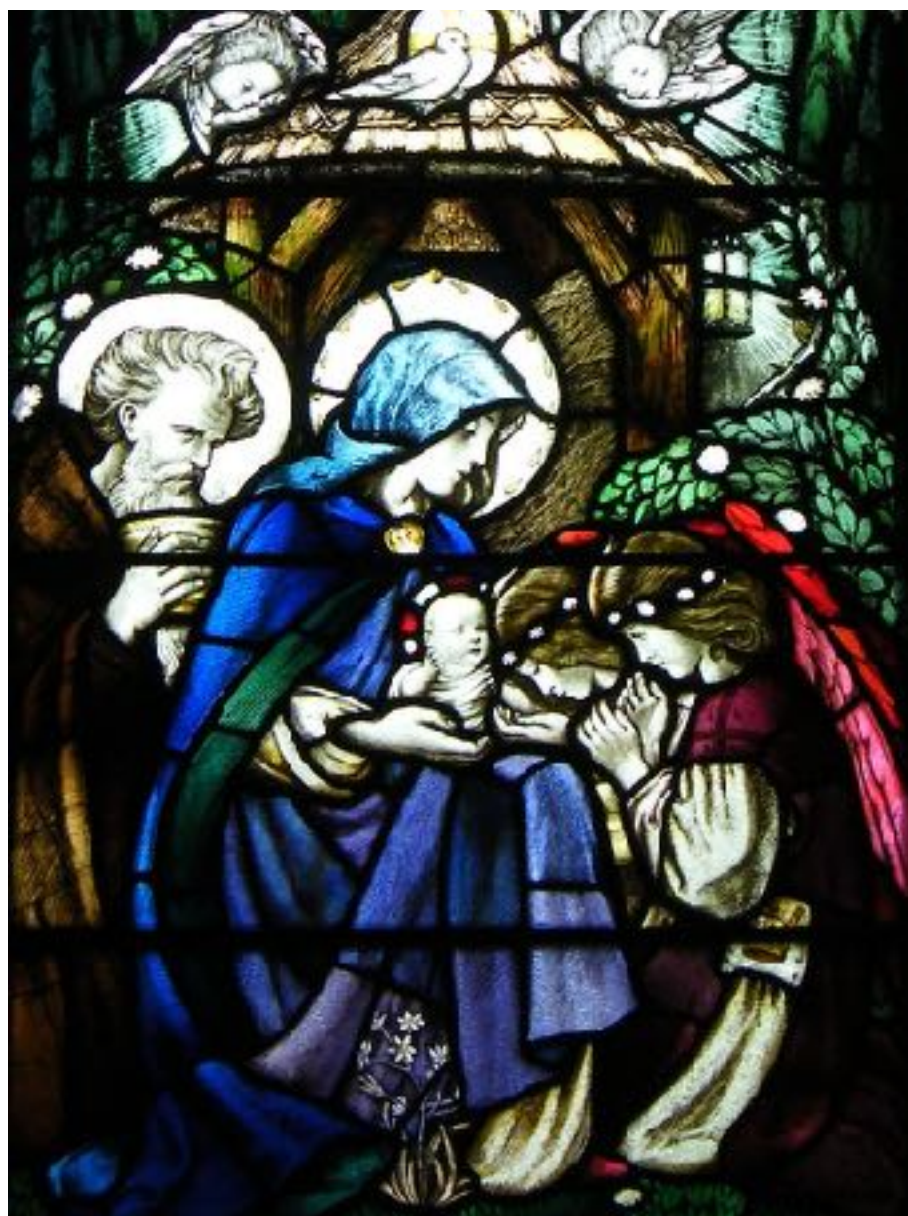
The nearest town, Girvan is also the location the nearest train station.

Girvan is a port town with a variety of shops and cafes. There is also an Asda supermarket and a petrol station (not part of the supermarket). Historically, Girvan had horse drawn carriages that would travel up and down the coast, but now there are buses locally and the train station has trains that travel up to Glasgow.

Parking on the outskirts of the town allows you to walk along the beachfront - this is very popular with dog walkers - but there is parking throughout the town. There is also a large open park facing the sea and Ailsa Craig which is popular in the summer or when the weather is good.

The harbour at Girvan is always worth a visit. A variety of boats and fishing vessels are generally in the harbour and it is also home to the Girvan RNLI lifeboat. Occasionally historic boats can be seen in the harbour. Boat trips to Ailsa Craig run from the harbour.

The harbour is also home to the Quay Zone, the local swimming pool and activity centre. Find out more about events and activities in Girvan at www.gogirvan.co.uk



Stained glass windows in St Common's church

PLACES TO VISIT

STRANRAER

Technically just in Dumfries and Galloway, Stranraer is has more facilities and shops.

Stranraer has always been a busy harbour since the 1800s, but even before the first harbour was built in 1820, boats had moored nearby and used unofficial wooden jetties, and by the 1830s, there were regular steam-packets sailing between Stranraer, Glasgow, Belfast and Girvan (the official ferry to Ireland didn't start until 1862). The original harbour is now used by some of the fishing and pleasure boats.

In the 1970s and 1980s, ferries would travel between Stranraer and Belfast, with Stranraer being a popular day trip shopping destination for people from Belfast. However, the ferry companies decided they needed a new, bigger port and the Belfast ferries moved further up the coast to Cairnryan, building a new terminal, taking a big source of the town's income with it.

There are still good quality shops and high street names to be found, and those with an eye for history can see some older buildings that are now sadly falling into disrepair.



Girvan harbour

The building in the middle of town is the Castle of St John. It's not always open but it's worth visiting if it is. It was built around 1510 as the family home for the Adairs, one of the most powerful families in late medieval Wigtownshire. It passed by marriage to the Kennedy family, early in the 1600s, and in 1680 was used by John Graham of Claverhouse during the suppression of the Galloway Covenanters. In 1820 it became a jail, with the cells last being used in 1907.

There are a number of cafes on the main high street as well as smaller shops off the side streets. There is a tourist information centre near the library.

Stranraer has a number of supermarkets including a Lidl, Tesco and Morrisons, and an Argos which is useful for larger items.

Parking in Stranraer is based around a "disc" system - you can collect a disc from the library and set it show what time you arrived, with most car parks having a two hour time limit. For those without a disc, there are other parking spaces that are either free or have a minimal parking fee. On street parking is mostly disc based.



The Castle of St. John, Stranraer



The Loch Ryan lighthouse just outside Stranraer

PLACES TO VISIT

PORTPATRICK

A pretty port village with some surprising history

Portpatrick is a pretty fishing port in Dumfries and Galloway. It's only 21 miles from Donaghadee in County Down, Ireland, but although there have been ferries across to Ireland since 1616, the port faces the full fury of the western gales on the coast, making it an incredibly difficult port. Huge amounts of money have been spent to try and improve and protect the harbour.

The first harbour was built in 1770, enclosing the southern end of the bay. IN 1821, John Rennie designed the North and South piers as two long quays that run out to sea and converge to form a harbour mouth. The North pier was destroyed by storms in 1839 but the South pier still survives. The modern harbour, known as the North Base, was bold in 1863 and is still in use.

Off Station Street in Portpatrick is St Andrew's Kirk, a church built in 1629. The circular tower is older and maybe medieval, with some suggestion due to it's shape, that it may have been a light house. The surrounding graveyard contains monuments to local sailors and sea captains, as well as memorials to local disasters, including the loss of

the ship Orion, which sank close to the harbour in 1850 with the loss of 60 lives.

Half a mile from the village, along the coastal footpath to the south, is the ruined Dunskey Castle. Perched on its rocky outcrop, it was built in the mid 1500s for the Adairs of Kinhilt (the same family that owned the Castle of St John in Stranraer), with the long wing to the north being added in 1620s. However the whole building was derelict by 1700.

There is no access to the interior of the castle and due to the steepness and dangerous nature of the cliffs you should stay on the path.

The defensive ditch on the landward side is all that remains of an earlier castle (also owned by the Adairs) that stood on this site. First recorded in the 1300s, it was destroyed around 1500 by the McCullochs of Myrton and Cardoness.



Portpatrick Harbour

PLACES TO VISIT

NEWTON STEWART

A beautiful drive to a picturesque town with an picture house style cinema

The drive to Newton Stewart is worth the journey by itself, and depending on how adventurous you feel, there are a variety of routes to take, from the main coastal road to smaller, one track boards where you'll need to use passing places or pull onto the grass verge if there's oncoming traffic. It is also on the way to Galloway Forest National Park.

The town lies in the heart of Galloway at the lowest riding point of the River Cree as it winds it's way from Loch Moan in the Galloway Forest down to Creetown and Wigtown Bay.

Creetown and Minnigaff on the east bank off the river date back to medieval times, but Newton Stewart was built in the late 1700s with the water of the Cree powering textile mills.

In total there are four bridges in the town and two more crossing one of the river's tributaries. The large hill seen from most of the town is Cairnsmore of Fleet, with the skyline to the north featuring the Minnigaff Hills, Lamachan and Curleywee.

The town has a small selection of larger shops off the main road including a Sainsburys and a Marks and Spencers food store, but it also has a lovely selection of “arts” style shops, selling paintings, photographs and home decorations, many of which are worth a visit.

The Cinema is a white building on the high street and shows a mix of new releases and a curated selection of older films (they have recently had a selection of movies soundtracked by Morricone across Mondays in November).

There are a number of walks around the town that are signposted, mostly setting off from the town’s car park.



The cinema at Newton Stewart

PLACES TO VISIT

AYR

Ayrshire's county town, don't let the roads put you off!

Ayr is the main county town and is very busy and popular. The main route to Ayr as suggested by Google, Apple Maps and Waze is generally along the outskirts which are busy main roads with roundabouts.

It is easier - and prettier - to take the sea road. Turn off the A77 at Turnberry and drive past Culzean, which gives you wonderful views of the Isle of Arran on the way.

Ayr has two major historic sites linked to Robert The Bruce, one of Scotland's greatest kings. St John's Tower was the site of King Robert's parliament in 1315, where the matter of succession of the throne was settled. Wallace's Tower in Ayr recognises the connection between William Wallace (Wallace's uncle had been sheriff of Ayr) and the town.

Ayr has a wide variety of shops to visit, including the Begg X Co outlet store. Begg manufacture extremely high end cashmere and woollen clothing both for themselves and for other luxury brands. Details about their outlet store - which has limited opening hours - can be found at www.alex-begg.co.uk

There is also an Odeon cinema in Ayr, a theatre and a number of museums relating to Robert Burns, the famous Scottish poet who lived in the area.



Ayr

PLACES TO VISIT

BELFAST

Under three hours on the fast Stena Line

From the port at Cairnryan, both car and foot passengers can take a ferry to Belfast, Whilst Cairnryan is only really accessible by car or taxi, the Belfast port is on the edge of the town, with buses timed to co-incide with the ferries, making a day trip as a foot passenger easy and practical (and cheap, if you book in advance).

Belfast's public transport requires you to pay using an app called Translink M-Link which you then use to buy an electronic ticket. It's easier to do this before your trip when you're not facing an impatient bus driver!

Belfast has a number of attractions including a beautiful town hall, but it's biggest is the world famous Titanic Museum. Tickets should be booked in advance at titanicbelfast.com - the slightly confusing range of tickets covers both inside and outside tours; we'd recommend either the Titanic Experience ticket or the White Star Premium Pass as both of these tickets cover the actual museum itself, which includes interactive exhibits about the history of Belfast, shipbuilding, the White Star Line as well as the Titanic's fateful journey, the enquiry afterwards and the discovery of her wreck at the end of the 20th century.

The “Black Cab Tours” are also popular. A number of companies offer them. These are private tours ran by cab drivers in traditional black cabs. The tours cover a variety of topics depending on the company used, but most cover the history of the Troubles, passing through both Protestant and Catholic areas, and may not be suitable for children as they cover the atrocities committed by both sides. The tours themselves are non-partisan. These need to be booked in advance.

As you would expect from a modern city, Belfast has a large number of shops and shopping areas, cafes and restaurants to suit all budgets and tastes. There’s also plenty of bars - and with the last ferry returning from Belfast at 11.30PM (and arriving back in Cairnryan at 1.52AM - there’s opportunity to sample the nightlife too... just remember to take a designated driver or book a taxi in advance from the port back to Tig Cottage!

It is possible - with a bit of planning - to spend the day outside of Belfast and take a trip to the famous Giants Causeway instead. If travelling as a foot passenger, then you need to either book a black taxi tour (expensive but personal and bespoke) or take one of the coach tours (the largest company is called Paddywagon) which is cheaper but ties you to a regulated timetable.

Alternatively, you can spend the night in Belfast and visit both the Titanic Museum and the Giant’s Causeway!



The Titanic Museum, Belfast

PLACES TO VISIT

EDINBURGH AND GLASGOW

Scotland's two largest cities are both within a (longer) day trip journey from Tig Cottage

You can travel to both Edinburgh and Glasgow from Tig Cottage (on different days, unless you really really love driving). Glasgow is also possible by train from Ayr.

Both cities are thriving and bustling with a huge number of tourist attractions.

Perhaps unfairly tarnished by its reputation from the 1980s, Glasgow has recently been voted one of the world's friendliest cities.

Edinburgh needs little introduction, and has some of Scotland's best art galleries as well as the iconic castle.

Whether you visit one or both, set off early, come back late and have a lie in the next day!

PLACES TO VISIT

OTHER PLACES OF INTEREST

Southwest Scotland has an incredible number of glorious places to visit

Scotland has so many wonderful places to visit that a disorganised tourist could basically turn off at a random turning and finding somewhere that was worth visiting without difficulty.

For those who are more organised, these are just some of the lovely places in the area.

Barr

Barr is an attractive village in the hills at the head of the Stinchar Valley. The beautiful drive takes you through the “Nick of the Balloch” near the Galloway Forest. There are a number of walks in the area, including a walk that goes to the Stinchar Falls. The tea room in the village has limited opening but there is a pub that sells food.

Culzean Castle and Country Park

Just off the A719 north of Girvan, this magnificent castle and grounds / country park are perched on the edge of cliffs

overlooking the sea. The garden is open most of the year, but the castle has more limited opening hours.

Isle of Whithorn

Not actually an island but a very pretty fishing village with a harbour and country pub. This is also near St Ninian's Cave, a seaside cave said to be the hideaway of an early Christian saint. For those whose eyes are turned a little less heavenwards, this area is where the famous horror movie, *The Wicker Man* was filmed in the 1970s.

Kirkcudbright

A beautiful town, known as Scotland's Artist Town, with a decent range of shopping options and a lovely art gallery that often has excellent exhibitions. The town also has a gin distillery (Dark Art Distillery) with more details at www.darkartdistillery.com

Kirkholme

Near Stranraer, the village of Kirkholme has a church and in the church's churchyard is a 10th century stone, carved with an elaborate Christian cross above a design of intertwined animal bodies. There is also a crude carving of a crucified Christ, and a sculpture of a man with a bird on his shoulder, who is likely Siguard, from Viking mythology. The combination of Viking and Christian symbols on the carving is what makes it so fascinating.

Wigtown

Known as Scotland's "book town", Wigtown's high street is

mostly made up of second hand bookshops, selling books ranging from modern to antique.

Maxwell's Otter / Monreith Beach

Gavin Maxwell, best known for the book Ring of Bright Water, the account of his life with an otter, came from this area of Scotland (although as an adult he lived much further north). A large sculpture of an otter, known as Maxwell's Otter, stands in commemoration of Maxwell and his otters. Although there are makeshift signs from the road, heading for St. Medan's Golf Course or the village of Monreith and then heading down towards the golf course will bring you to the statue. It's worth taking a moment and looking down from the otter's location as it is a lovely view.

The nearby Monreith beach is pretty and secluded, and when the tide is out there is a huge amount of different types of seaweed on the beach. The beach is accessible by a large number of steps - the small cubicles half way down are toilets.



The Maxwell's Otter sculpture

THINGS TO DO

MEMBERSHIPS

If you're seeing the sights, consider joining these organisations

Scotland's historic sights are managed by two major organisations, Historic Environment Scotland (HES) and the National Trust for Scotland (NTfS).

While admission to some sights are free, many of the enclosed environments like castles or houses have a hefty entrance fee.

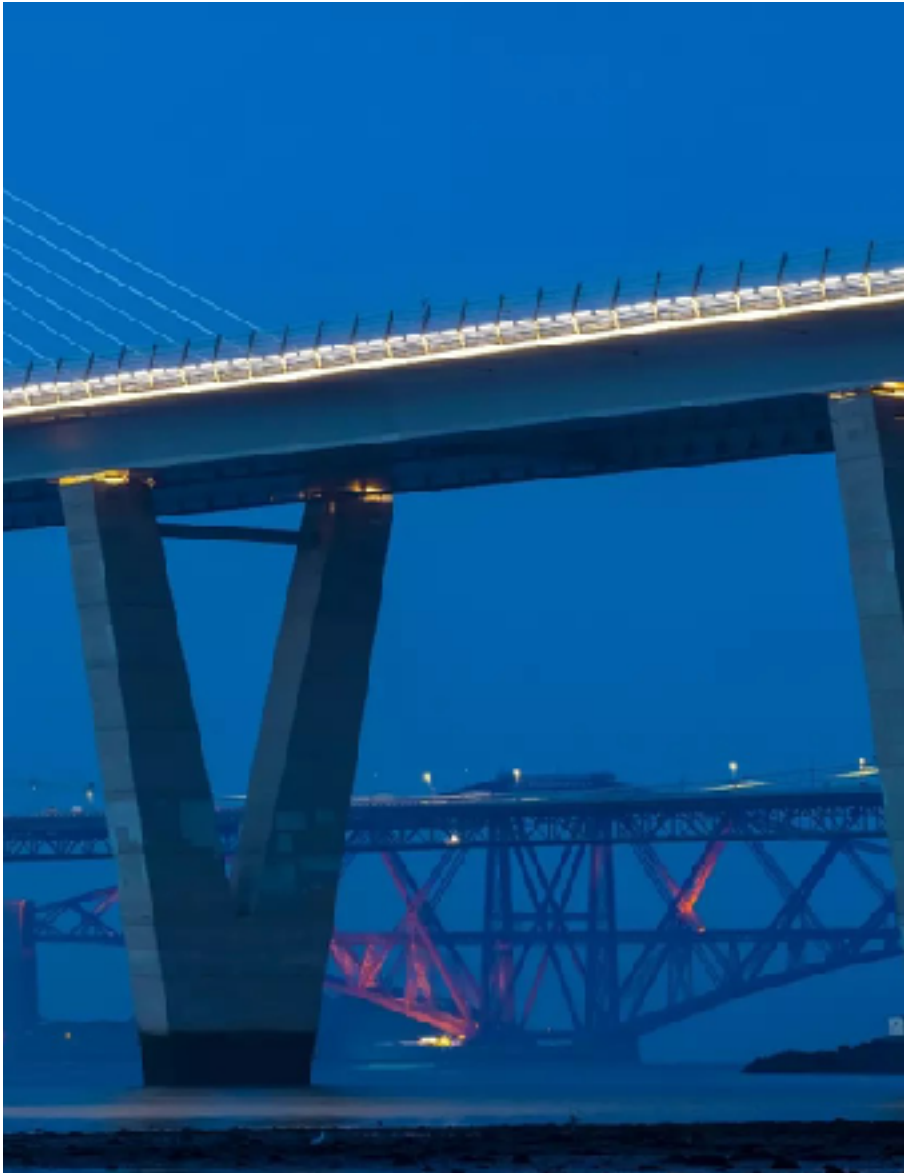
Both organisations offer yearly memberships which can pay for themselves with only a couple of visits to different locations. You can join in advance online and sometimes at the locations themselves.

Membership of NTfS is £117 for two adults.

Two adult tickets for Culzean Castle is £40 plus parking, two tickets for Robert Burns' Birthplace is £22...you can see how it adds up.

Membership of HES for two adults is £92.

Two adults tickets to Edinburgh Castle is £39, two tickets for Stirling Castle is £39...again, this can add up rapidly.



The Forth Bridge from the Queensferry Crossing



The magnificent staircase inside Culzean Castle, an easy drive from Tig Cottage. The castle is managed by NTfS.

THINGS TO DO

DISTILLARIES

Whisky distilleries can be found throughout the Scottish lowlands, with some gin distilleries now opening up too.

Scotland is known for its whisky and whilst there are plenty of distilleries across South West Scotland, not all run tours or have an onsite store.

For instance, there is the Ailsa Bay Distillery in Girvan, producing Ailsa Bay whisky. Owned by the large producer, William Grant & Sons, originally the distillery was simply to produce whiskey to go into Grant's blended offerings, and it was only due to demand that they produced a separate single malt which is available to buy from various online retailers. Most of the Distillery's production still goes into Grant's traditional blended whisky.

Distilleries open and close their shops and tours depending on season and demand, and tours often need to be pre-booked. If planning to visit, please check the distillery's website online for the most up to date information.

Annandale Distillery, near Annandale / Gretna

First established in 1836, the distillery was given a £10.5 million restoration in 2014, and produces single malt whisky. It offers tours and has a shop and a cafe.

<https://annandaledistillery.com>

Bladnoch Distillery, near Wigtown.

Established in 1817 by John and Thomas McClelland, Bladnoch is the world's oldest privately owned distillery. It is currently running tours and has an onsite shop.

<https://bladnoch.com>

Crafty Distillery, near Newton Stewart

Crafty produces whisky, gin and vodka. It has both tours and an onsite shop.

<https://craftydistillery.com>



A vintage postcard from Ballantrae

THINGS TO DO

GOLF

A good walk ruined or the best thing ever, golfing is big in South West Scotland.

There are four major golf courses within easy reach of Tig Cottage.

Turnberry golf course is the closest professional golf course to Tig Cottage, and perhaps the most famous in the area. It's also the most expensive for the day visitor. For non-golfers, there is a club house and restaurant that serves afternoon tea. It is an Open Championship course, and has fantastic views across the beach. The postcode for Turnberry is KA26 9LT. For booking information, call 01655 334032.

Royal Troon is a traditional out and back links course, with the Open Champion returning to Royal Troon in 2024. The postcode for the course is KA10 6EP, and to book, call 01292 311 555.

Preswick is a traditional course that runs through dunes and fairways. The famous first hole is one of the most intimidating in the game. The postcode is KA9 1QC. Call 01292 473 812 to book.

Western Gailies is a wonderfully varied course with often challenging winds. The postcode for the course is KA11 5AE. Call 01294 311 649 for booking information.



Turnberry Golf Course



Tig Cottage is a proud supporter of the G&SA Biosphere.

THINGS TO DO

THE GALLOWAY AND SOUTH AYRSHIRE BIOSPHERE

Tig Cottage is inside the UNESCO Biosphere, and is proud to be a registered UNESCO Biosphere supporter.

The UNESCO Biosphere is a designated area of southwest Scotland covering Galloway and Southern Ayrshire. It includes iconic wildlife and natural habitats that are recognised as being of international importance.

The Biosphere organisation supports conservation, learning and a sustainable local economy. It's a world class environment for both people and nature. Biosphere businesses look to support the aims of the Biosphere by acting sustainably and raising the profile of other businesses that work within the Biosphere.

As such, we'd love to bring the following businesses to your attention:

Biosphere Bikes in Girvan offer bike hire of manual bikes, electric bikes and bikes for who are not so able bodied, with the aim of becoming a hub for cycling in the local community. Located next to the Quay Zone Leisure Centre in Girvan, Biosphere Bikes has varied opening hours during the year - for current opening hours, please visit their website at <https://biospherebikes.com/contact-us>

Matthew McFadzean is a Biosphere Dark Sky ranger, offering guided star gazing events taking advantage of the dark skies in the region. Find out more at www.darkskyranger.co.uk

Galloway Wild Foods in Galloway offers guided foraging sessions that can be tailored for your needs, interests and location preference all year round. They can be contacted at <https://gallowaywildfoods.com/>

Glenquicken Troutmasters Fishery, near Creetown, offers day tickets for fly fishing, either on a per fish (maximum three) or an all day catch and release ticket. Dogs are not allowed around the loch. Find out more and book at www.glenquicken troutmasters fishery.co.uk

Gallovidia Books in Kirkcudbright is an independent bookshop selling a curated selection of books, including new, mainstream releases, much loved classics and books

about Scotland. Check their opening hours and find out more at www.gallovidiabooks.co.uk

Kitchen Coos and Ewes offer farm tours and experiences where you can see traditional Highland cattle and Beltex sheep from the comfort of a purpose built trailer - think of it as a Highland Cow safari! Tours must be booked in advance. Find out more at www.kitchencoosandewes.com

Swim the Lochs is run by Sarah, who offers open water swimming in the region's lochs for those who want to experience the benefits of cold water swimming safely. Find out more at www.facebook.com/swimthelochs

THINGS TO DO

SCOTLAND'S UNESCO TRAIL

Scotland is the first country in the world to bring together 13 UNESCO sites into one incredible trail.

Many of our guests stay in the South Ayrshire region - it's not like there isn't plenty to do!

But for those with more time and ability to explore, the UNESCO Trail offers an incredible itinerary. Taking in a variety of fabulous locations, it covers Edinburgh, Glasgow, the Highlands and out to some of the Scottish islands, including Orkney, with its incredibly well-preserved Neolithic site at Skara Brae that dates back 5,000 years.

You can find out more about the Scottish UNESCO Trail at www.visitscotland.com/see-do/unesco-trail

ABOUT TIG COTTAGE

THANK YOU!

We're so glad you came to stay.

We really hope that everything at Tig Cottage has been to your liking.

If you've enjoyed your stay, we really hope you'll leave us a review where you booked your stay.

If there's anything you think we should change, or could improve, please let us know by emailing hello@tigcottage.com or dropping us a message via the booking platform app.

You can follow us on Facebook at www.facebook.com/tigcottage and you can find our website at www.tigcottage.com

ABOUT TIG COTTAGE

LICENCE

Properties in Scotland will be licensed.

Short term holiday lets in Scotland will be licensed from autumn 2023, and each property will have a licence number.

Our licence has been applied for, but we don't have our license number yet.

When we do, it'll be written in below.

Tig Cottage Licence Number:

ABOUT TIG COTTAGE

EICR REPORT

Electrical Installation Condition Report (yes, I know I wrote “report” twice!)

An Electrical Installation Condition Report is a report about the wiring in a property, and fixed appliances. It’s a very very long report, and here’s a copy of it if you’d like to read it (the licensing people think you might).

In summary, the wiring in the cottage is about 35 years old. It works fine but we might want to think about a new consumer unit (you’ll know it as a fusebox where you’ve got all the little switches).

The EICR also mentions smoke, heat and carbon monoxide alarms. These have all been fitted (you’ll see smoke and heat alarms in the living room, dining room, kitchen, upstairs hallway, and a carbon monoxide detector in the living room). The control panel for the alarms is in the hall should you need it (we do ask that you don’t tamper with this as it’s really loud if it goes off).

ABOUT TIG COTTAGE

LEGAL STUFF

As part of Scotland's rules around holiday lets, you can read this if you want.

Or not. It's quite dull but it's here if you want to.

In 2023, Scotland introduced licensing for holiday lets, and part of the rules are that guests will have access to certain information.

1. The holiday let licence for Tig Cottage
2. Details of fire, gas and electrical safety information
3. A copy of the Gas Safety Report
4. A copy of the Electrical Installation Condition Report
5. A copy of the Portable Appliance Testing Report

You also get to know that Tig Cottage has an EPC of G, although this was based on it's old boiler - it has a spangly new one now.

ABOUT TIG COTTAGE

GAS SAFETY INFORMATION

All about gas.

Tig Cottage uses Liquid Petroleum Gas (LPG) due to its remote location. The red canisters in the back garden contain LPG, and they get replaced every so often by the lovely guys at Shellknowne Garage. You might have seen them pop up to do this if you've been here a few days.

The heating and hot water are powered by LPG and a rather nice combi boiler we had fitted last year. On the odd occasion, the boiler can have a moment and need a reset; the first you'll know about this is if the heating or hot water doesn't come on.

Give us a call or contact us through the app for the booking service you used, and we'll get it sorted.

As part of renting out Tig Cottage, we've got a Gas Safety Certificate. It's not very exciting, but here's a copy of it.

LPG Gas Safety Certificate



Registered business	Job address	Landlord/agent			
Gas Safe number 521145 Darwin Johnstone Gas Services 48 Craigholm Road Ayr Ayrshire KA7 3LJ +44 01292286947	Tig Cottage Ballantrae KA26 0LL	N/A			
	App 1	App 2	App 3	App 4	
Inspected	Yes				
Appliance type	Combination Boiler				
Location	Kitchen				
Make/model	Vaillant/Eco-Tec Plus 832				
Flue type	RS				
Operating pressure	31mb				
Combustion analyser reading	0.0011 / 112p / 10.3%				
Safety Devices correct operation	Yes				
Ventilation provision satisfactory	Yes				
Visual condition of the flue & termination satisfactory	Yes				
Flue performance checks	Pass				
Serviced	Yes				
Appliance supply pressure	36mb				
Appliance gas tightness test	Yes				
Electrical isolation satisfactory	Yes				
Safe to use	Yes				
Approved CO alarm fitted?	Yes				
Is CO alarm in date?	Yes				
Testing of CO alarm satisfactory	Yes				
Others					
Cylinder/final connection hoses to LAV/boat satisfactory	Yes				
Gas installation pipework visual inspection satisfactory	Yes				
Gas tightness satisfactory	Yes				
ECV accessible and operable	Yes				
LPG regulator operation pressure	36.00			mbar	
LPG regulator lock-up pressure	40.00			mbar	
Next inspection due on or before	01/05/2024				
Safety device					
Has a Warning/Advice Notice been raised?				No	
Have warning labels been attached?				No	
Has the responsible person been advised?				No	
Details of work carried out					
Lpg gas safety check					
Details of remedial work required					
Declaration of Gas Safety					

LPG Gas Safety Certificate (175)

Registered business :Darwin Johnstone Gas Services

Registered business address :48 Craigholm Road, Ayr, Ayrshire, KA7 3LJ

SECTION A. DETAILS OF THE PERSON ORDERING THE REPORT

 Name: Gregory Pittford
 Address: 43 Woodilee Avenue, Spalding, Morayshire, PE12 0JH
SECTION B. REASON FOR PRODUCING THIS REPORT

 Reason: landlord certificate
 Date(s) on which inspection and testing was carried out: 6/7/22
SECTION C. DETAILS OF THE INSTALLATION WHICH IS THE SUBJECT OF THIS REPORT

 Occupier: _____
 Address: Two Cottage, Balmorie
 Description of premises (Tick as appropriate): Domestic Commercial Industrial Other
 Estimated age of the wiring system: 35 years Evidence of additions or alterations: Yes No Not apparent
 If 'Yes' estimate age: _____ years. Installation works available? Proprietor (S.I.): Yes No Date of last inspection: N/A
SECTION D. EXTENT AND LIMITATIONS OF INSPECTION AND TESTING

 Scope of the electrical installation covered by this report: All electrical wiring

Agreements/arrangements covering the reasons (Paragraph 4.1.2): _____

Agreed with (name): _____

Operational limitations including the reasons: _____

The inspector and testing detailed in this report and accompanying schedules have been carried out in accordance with BS 7671:2018 (IET Wiring Regulations), as amended to 2-22. It should be noted that cables concealed within trunking and conduits, under floors in roof spaces and generally within the fabric of the building or underground have not been inspected unless specifically agreed between the client and inspector prior to the inspection. An inspection should be made available at accessible cable-pulling points where electrical equipment is installed.

SECTION E. SUMMARY OF THE CONDITION OF THE INSTALLATION

 General condition of the installation (in terms of electrical safety): Fair, recommended upgrade of consumer unit to RCD protected

 Overall assessment of the installation in terms of its suitability for continued use: SATISFACTORY (Table 1 as appropriate)

If 'Unsatisfactory' assessment indicates that dangerous (code C1) and/or seriously dangerous (code C2) conditions have been identified

SECTION F. RECOMMENDATIONS

 Where the overall assessment of the suitability of the installation for continued use above is stated as 'UNSATISFACTORY', the recommendations that any observations classified as 'Danger severe' (code C1) or 'Potentially dangerous' (code C2) are acted upon as a matter of urgency, investigation without delay is recommended for observations classified as 'Further investigation required' (code F). Observations classified as 'Requires no remedial action' (code C3) should be given due consideration. Subject to the necessary remedial action being taken, the recommended further installation is further inspected and tested by 4/6/22 date.

SECTION G. DECLARATION

I/We, being the person/s responsible for the inspection and testing of the electrical installation (as indicated by my/our signature below), particulars of which are detailed above, having exercised reasonable skill and care when carrying out the inspection and testing, hereby declare that the information in this report, including the observations and the attached schedules, provides an accurate assessment of the condition of the electrical installation taking into account the stated extent and limitations in Section D of this report.

Inspected and issued by:

 Name (Capital): Alan J Smith
 Signature: _____
 Full name of: A. J. Smith
 Position: Owner
 Address: 43 Woodilee Ave, Spalding, Moray
 Date: 07/06/22

Report authored for issue by:

 Name (Capital): _____
 Signature: _____
 Full name of: SAME
 Position: _____
 Address: _____
 Date: _____

 SECTION H. SCHEDULE(S) 1-4 schedule(s) of inspector and A schedule(s) of test results are attached.

The attached schedule(s) are part of this document and this report is valid only when they are attached to it.

SECTION J. SUPPLY CHARACTERISTICS AND EARTHING ARRANGEMENTS

Earthing arrangements	Number and Type of Live Conductors	Number of Supply Parameters	Supply Protective Device Characteristics
TN-C <input type="checkbox"/> TN-S <input type="checkbox"/> TN-C-S <input type="checkbox"/> TT <input type="checkbox"/> IT <input type="checkbox"/>	AC <input checked="" type="checkbox"/> DC <input type="checkbox"/> 1-phase 2-wire <input checked="" type="checkbox"/> 2-wire <input type="checkbox"/> 2-phase 2-wire <input type="checkbox"/> 3-wire <input type="checkbox"/> 3-phase 2-wire <input type="checkbox"/> Other <input type="checkbox"/> 3-phase 4-wire <input type="checkbox"/>	Nominal voltage, U_{N} <u>240</u> V Nominal frequency (Hz) <u>50</u> Hz Prospective fault current, I_p <u>0.26</u> kA External c.u.u. impedance, Z_e <u>0.24</u> Ω	BS (C/N) <u>23</u> Type <u>IIb</u> Rated current <u>60</u> A
Confirmation of supply polarity <input type="checkbox"/> (Delete 'C' for incoming BS for supply only measurement)			
Other sources of supply <input type="checkbox"/> (see installation attached schedule)			

SECTION K. PARTICULARS OF INSTALLATION REFERRED TO IN THE REPORT

Masses of Earthing	Details of Installations Earth Electrode (where applicable)	
Distributor's Facility <input type="checkbox"/>	Type (e.g. rods, tape etc)	Location
Installation earth electrode <input type="checkbox"/>	Electrode resistance to earth <input type="checkbox"/>	
Main Protective Conductors		
Existing conductors	Material <u>Copper</u> size <u>16</u> mm ²	Connection/continuity verified <input checked="" type="checkbox"/>
Main protective bonding conductors (to extraneous-conductive-parts)	Material <u>Copper</u> size <u>10.5</u> mm ²	Connection/continuity verified <input checked="" type="checkbox"/>
To water installation pipes <input checked="" type="checkbox"/>	To gas installation pipes <input type="checkbox"/>	To oil installation pipes <input type="checkbox"/>
To air-ventilation pipes <input type="checkbox"/>	To other metal pipes <input type="checkbox"/>	To other metal pipes <input type="checkbox"/>
To lightning protection <input type="checkbox"/>	To other <input type="checkbox"/>	To other <input type="checkbox"/>
Main Switch / Selective-Fuse / Circuit-Breaker / RCD		
Location <u>Upstairs cupboard</u>	Current rating <u>100</u> A	RCD type <u>type 2</u>
Rated residual operating current (mA) <u>30</u>	Rated tripping time (ms) <u>0.04</u>	Rated time delay <u>0.04</u> ms
BS (EN) <u>60339-7</u>	Voltage rating <u>230</u> V	Measured operating time (s) <u>0.04</u>
Nc. of poles <u>2</u>		

SECTION H. OBSERVATIONS

Referring to the attached Schedule of Inspection and Test Results, are subject to the limitations specified in Section D. Failure and Limitations of the Inspection and Testing: No remedial action is required. The following observations are made:

Inspection Schedule Item No. or Test	OBSERVATIONS	Classification Code C1, C2, C3 or FI (see below)
	Recommended upgrade of Consumer unit	C3
	Have replaced tails and installed 16mm earth cable	✓
	NIS Customer to fit own Switch, heat & Co. alarm	*
One of the adjacent Codes, as appropriate, has been allocated to each of the observations made above to indicate the person(s) responsible for the inspection the degree of urgency for remedial action.	Danger present - Risk of injury, immediate action required.	C1
	Potentially dangerous - urgent remedial action required.	C2
	Improvement recommended.	C3
	Further investigation required without delay.	FI

Additional observations are recorded on the following number of continuation sheet(s) _____

CLASSIFICATION	Accessible condition	Inspection completed	Date EICR	Inspection recommended	Date CI	Further investigation	No visible	N/A	Insurers	IF	Not applicable	NA
ITEM No.	DESCRIPTION										OUTCOME	
											Use notes above. Provide additional comment where appropriate. CI, IF, CI and IF notes items to be recorded in Section 6 of the Condition Report.	
3.0 EXTERNAL CONDITION OF NSRPE EQUIPMENT (NSRPE INSPECTION ONLY)												
3.1	Service cable										/	
3.2	Service head										/	
3.3	Earthing arrangement										/	
3.4	Vene tests										/	
3.5	Warning equipment										/	
3.6	Isolator (where present)										NA	
3.0	PRESENCE OF ACCESS ARRANGEMENTS FOR OTHER SERVICES SUCH AS MICROGENERATION (321.6, 321.7)										NA	
3.00 BARTING / BONDING ARRANGEMENTS (411.1, 2 Super 14)												
3.1	Presence and condition of distributor's earthing arrangement (5-2 1.2.1, 542.1.2.2)										/	
3.2	Presence and condition of earth electrode connection where applicable (542.1.2.3, 542.1.2)										NA	
3.3	Position of earthing / bonding labels at all appropriate locations (514.1.1)										NA	
3.4	Presence, condition & accessibility of earthing conductor at main earthing terminal (542.1.3, 542.1.2)										/	
3.5	Confirmation of earthing conductor size (542.3, 542.1.1)										/	
3.6	Presence, condition & accessibility of other protective bonding conductors & connections (542.3.1, 542.1.1)										/	
3.7	Confirmation of main protective circuit breaker (542.1.1)										/	
3.8	Presence, condition & accessibility of other protective bonding conductors & connections (542.3.1, 542.1.1)										/	
4.0 CONSUMER UNIT(S) / DISTRIBUTION BOARD(S)												
4.1	Adequacy of working space / accessibility to consumer unit / distribution board (13C-10, 513.1)										/	
4.2	Security of fitting (124.1.1)										NA	
4.3	Condition of enclosure(s) in terms of IP rating etc (116.2)										NA	
4.4	Condition of enclosure(s) in terms of fire rating etc (4.1.1, 2.1.1, 4.1.1.3, 525.3)										NA	
4.5	Furniture not damaged/debris free as to impair safety (551.2)										NA	
4.6	Presence of main linked switch (as required by 482.1.201)										NA	
4.7	Operation of main switch functional check (492.10)										NA	
4.8	Manual coordination of circuit breakers and PQDs against disconnector (543.12)										NA	
4.9	Correct coordination of circuit breakers and protective devices (211.4, 514.8)										NA	
4.10	Presence of RCD as required test code at main consumer unit / distribution board (514.12.2)										NA	
4.11	Presence of residual current (protect) ratio meter warning meter at or near consumer unit / distribution board (514.14)										NA	
4.12	Presence of alternative supply warning notice also near consumer unit / distribution board (514.15)										NA	
4.13	Presence of other required labelling (where applicable) (Section 514)										NA	
4.14	Compatibility of protective devices, buses & other components: correct type & rating into zone of unprotective (level of damage, arcing or overheating) (Sections 415, 401, 415, 513, 532, 4.202)										NA	
4.15	Single-pole switches, or poleless devices in line sub-circuits only (133, 14.1, 220.3.3)										NA	
4.16	Protection against mechanical damage where cables enter consumer unit / distribution board (512.6.1) (522.8.6, 400.8.1)										NA	
4.17	Protection against electromagnetic effects where cables enter consumer unit / distribution board / enclosures (521.5)										NA	
4.18	RCD(s) provided for fault protection - includes RCBOs (411.4.204, 414.6, 536.3)										NA	
4.19	RCD(s) provided for additional protection requirements - includes RCBOs (415.1) (See Item 5.10)										NA	
4.20	Confirmation of indication that RCD is functional (451.1)										NA	
4.21	Confirmation that ALL conductor connections, including unenclosed busbar, are correctly installed terminals and are tight and secure (526.1)										NA	
4.22	Adequate arrangements where a generating set operates in parallel alternative to the public supply (501.6)										/	
4.23	Adequate arrangements where a generating set operates in parallel with the public supply (501.7)										/	

OUTCOMES	Acceptable condition	✓	Unacceptable condition	State 24 or 25	Improvement recommended	State 26	Further investigation	FI	FI not verified	NI	Limitation	LM	NI/ applies	NA			
SEEN No.	DESCRIPTION										OUTCOME See notes above. Provide additional comment where appropriate. C1, C2, C3 and FI noted items to be recorded in Section 6 of the Condition Report						
5.0	DISTRIBUTION / FINAL CIRCUITS																
5.1	Identification of conductors (Section 5.1.1)																
5.2	Cables correctly supported throughout their run (501.10.201; 502.1.1)																
5.3	Condition of insulation of live parts (416.1)																
5.4	Non-sheathed cables protected by enclosure in conduit, ducting or trunking (521.10.1; 526.8) To include the integrity of conduit and trunking systems (metallic and plastic)																
5.5	Adequacy of cables for current-carrying capacity with regard for the type and nature of installation (Section 521)																
5.6	Coordination between conductors and overrated protective devices (531.1; 532.2.1)																
5.7	Adequacy of protective devices type and rated current for fault protection (511.3)																
5.8	Presence and adequacy of circuit protective conductors (411.3.1.1; Section 54.8)																
5.9	Wiring system(s) appropriate for the type & nature of the installation & external influences (Section 522)																
5.10	Concealed cables installed in prohibited zones (see Section D, Color and Limitations) (520.4.200)																
5.11	Cables concealed under floors, above ceilings or in walls/partitions, adequately protected against damage (see Section D, Color and Limitations) (520.4)																
5.12	Provision of additional requirements for protection by RCD's not exceeding 30 mA (411.1) a) for all socket-outlets of rating 32 A or less, unless an exemption is permitted (411.3.3.1) b) for the supply of mobile equipment not exceeding 32 A rating for use outdoors (411.3.3.2) c) for cables concealed in walls at a depth of less than 50 mm (522.5.200; 522.6.200) d) for cables concealed in walls/partitions containing metal parts, regardless of depth (522.6.300) e) for final circuits supplying luminaires within domestic (household) premises (511.3.4)																
5.13	Provision of fire barriers, sealing arrangements and protection against thermal effects (Section 527)																
5.14	Bare or 1-core segregated / separate conductors in bare cable (524.1)																
5.15	Cables segregated / separated from communications cabling (525.2)																
5.16	Cables segregated / separated from non-electrical services (526.3)																
5.17	Termination of cables at enclosures - indicate extent of sampling in Section D of the report a) Connections soundly made and under roundhead strain (528.4) b) No bare insulation of a conductor relative outside enclosures (528.8) c) Connections of live conductors adequately enclosed (528.6) d) Adequately connected at point of entry to enclosure (glands, bushes etc.) (527.6.5)																
5.18	Condition of accessories including socket-outlets, switches and joint boxes (501.201)																
5.19	Suitability of accessories for external influences (512.4)																
5.20	Adequacy of working space / accessibility to equipment (102.11; 513.1)																
5.21	Single pole switching or protective devices in live conductors only (130.14.1; 530.3.2)																
6.0	LOCATION(S) CONTAINING A BATH OR SHOWER (100.110A.70-)																
6.1	Additional protection for all low voltage (LV) circuits by RCD not exceeding 30 mA (701.1.11.3.1)																
6.2	Where used as a protective measure, requirements for SELV or PELV nets (701.4.14.3)																
6.3	Drainage suitable comply with BS EN 61036-2-3 formerly BS 3034 (701.3.12.3)																
6.4	Presence of supplementary bonding conductors, unless not required by BS 7671:2018 (701.4.15.2)																
6.5	Low voltage (e.g. 230 volt) socket-outlets fitted at least 3 m from zone 1 (791.6.12.3)																
6.6	Suitability of equipment for external influences for installed location in terms of IP rating (701.5.12.2)																
6.7	Suitability of accessories and control gear etc. for a particular zone (701.5.12.3)																
6.8	Suitability of current-carrying equipment for particular position within location (701.5.5)																
7.0	OTHER PART / SPECIAL INSTALLATIONS OR LOCATIONS																
7.1	List all other special installations or locations present, if any. (Record separately if records of particular inspectors applied.)																

Inspected by: NAME (CAPITALS)

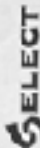
Alan Smart

Signature

Date 6/1/22

EICR 270217

CIRCUIT CHART AND SCHEDULE OF TEST RESULTS (18 CIRCUITS)



06 Reference No. _____

08 Location & Type Upper Saddle

Details of checks and/or related equipment referable to _____

Approved by _____

1 of 18

at CE

0 24 D

0 26 M

Phase required and used (where appropriate) _____

Contact supply polarity confirmed

CIRCUIT DETAILS

TEST RESULTS

No.	Circuit Description	Circuit Details			Protective Device			Continuity			Insulation Resistance			RCC Protection (MVA, I _{sc} for RCCs, or value at 20mA or less only)	Polarisation Index (PI) or other test results	Remarks
		Type	Ref. code	Ref. code	Class	Rating	Rating	Rating	Phase	Phase	Phase	Phase	Phase			
1	Socket	A	6.2.3	A	32	0.6	0.6	0.6	0.6	0.6	0.6	0.6	0.6	0.6	0.6	
2	Socket (Upper)	A	2.3.6	A	32	0.6	0.6	0.6	0.6	0.6	0.6	0.6	0.6	0.6		
3	Socket (Upper)	A	2.3.6	A	32	0.6	0.6	0.6	0.6	0.6	0.6	0.6	0.6	0.6		
4	Socket (Upper)	A	2.3.6	A	32	0.6	0.6	0.6	0.6	0.6	0.6	0.6	0.6	0.6		
5	Lighting (Upper)	A	2.3.6	A	16	0.6	0.6	0.6	0.6	0.6	0.6	0.6	0.6	0.6		
6	Lighting (Upper)	A	2.3.6	A	16	0.6	0.6	0.6	0.6	0.6	0.6	0.6	0.6	0.6		
7	Lighting (Upper)	A	2.3.6	A	16	0.6	0.6	0.6	0.6	0.6	0.6	0.6	0.6	0.6		
8	Socket	A	6.2.3	A	32	0.6	0.6	0.6	0.6	0.6	0.6	0.6	0.6	0.6		
9	Socket	A	6.2.3	A	32	0.6	0.6	0.6	0.6	0.6	0.6	0.6	0.6	0.6		

Insulation resistance test was run in accordance with BS 7671:2018

Code for Wiring Type	2	3	4	5	6	7	8	9	10	11	12	13	14	15	16	17	18	19	20	21	22	23	24	25	26	27	28	29	30	31	32	33	34	35	36	37	38	39	40	41	42	43	44	45	46	47	48	49	50	51	52	53	54	55	56	57	58	59	60	61	62	63	64	65	66	67	68	69	70	71	72	73	74	75	76	77	78	79	80	81	82	83	84	85	86	87	88	89	90	91	92	93	94	95	96	97	98	99	100
----------------------	---	---	---	---	---	---	---	---	----	----	----	----	----	----	----	----	----	----	----	----	----	----	----	----	----	----	----	----	----	----	----	----	----	----	----	----	----	----	----	----	----	----	----	----	----	----	----	----	----	----	----	----	----	----	----	----	----	----	----	----	----	----	----	----	----	----	----	----	----	----	----	----	----	----	----	----	----	----	----	----	----	----	----	----	----	----	----	----	----	----	----	----	----	----	----	----	----	----	-----

TEST INSTRUMENTS USED

Manufacturer	Type	Serial No.	Date Acquired	Manufacturer	Type	Serial No.	Date Acquired	Manufacturer	Type	Serial No.	Date Acquired
Fluke	IAFT 155 L	10954	2018	Fluke	IAFT 155 L	10954	2018	Fluke	IAFT 155 L	10954	2018
Fluke	1000	1000	2018	Fluke	1000	1000	2018	Fluke	1000	1000	2018

ABOUT TIG COTTAGE

PAT TESTING REPORT

The Portable Appliance Testing Report

While the EICR talks about the fixed electrical side of things, the PAT report looks at portable devices. You might notice that everything that plugs in has little stickers. This is to show that it's okay to be plugged in. You might have seen these at your place of work or in shops.

Did you know there's not a formal PAT test report form? Yes, we were surprised too! It's more about the records kept by the electrician who does the PAT testing.

Here's our PAT test. Alan is our local electrician.

If you find something that is plugged in has stopped working, please let us know. Likewise, please let us know if one of the bulbs goes (they last a long time but they do go eventually).

Alan Smith
A.S Electrics
26 McCulloch Road
Girvan
KA26 0EF
Mob: 07745954351
Tel: 01465713412

Location/Premises TIG Cottage, Ballentrae, KATG OLL

Portable appliance testing (PAT) has been carried out on 14 appliances at the above premises/location.

Appliances have been labelled with date of completion of 11/23 and next test due dates of 11/23.

Your sincerely,



Alan Smith

ABOUT TIG COTTAGE

FIRE SAFETY INFORMATION

You've already seen this.

In the kitchen, you'll find a Fire Safety Information notice. In case of a fire, you should raise the alarm (in Tig Cottage, this means shouting that there is a fire to anyone else who needs to know), getting out of the cottage and calling 999.

Exiting the cottage can be through any exit you like, but we have marked two doors (the front door and back door) as fire exits so they are kept clear.

When you call 999, you should ask for the Fire Brigade.

The full, formal, scary address of Tig Cottage is:
TIG COTTAGE, on the C45 from Craigneil Road, Colmonell,
South West to A77T, South of Ballantrae Bridge, Ballantrae,
Girvan, KA26 OLL.

Please wait a safe distance from the cottage and don't go back inside until it's safe.



Tig Cottage 1879